

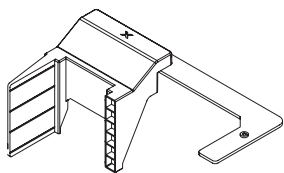
xTool Rotary Attachment 3 for xTool P2 and xTool P2S

Safety tips

The product contains small parts. Keep it away from children to prevent accidental ingestion.

Operation guide

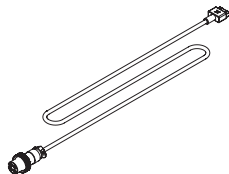
This manual provides instructions on how to use the limit piece, thumb screw, and aviation connector cable to install xTool Rotary Attachment 3 (referred to as "xTool RA3") onto xTool P2S. The installation method for xTool RA3 onto xTool P2 is similar.



Limit piece



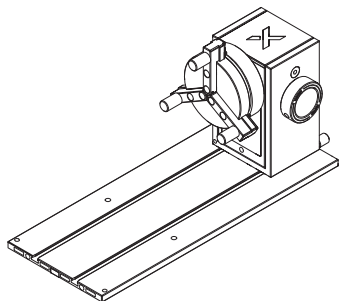
Thumb screw



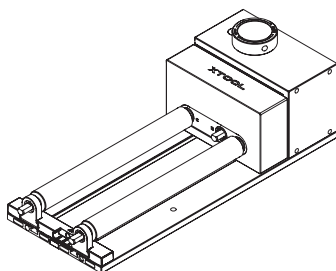
Aviation connector cable



Please first refer to the **Quick Start Guide** for xTool RA3 and follow the steps outlined in it to install xTool RA3 in either the jaw chuck mode or the roller mode, based on your needs.



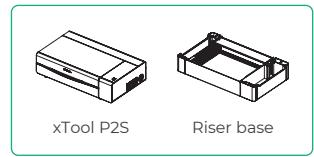
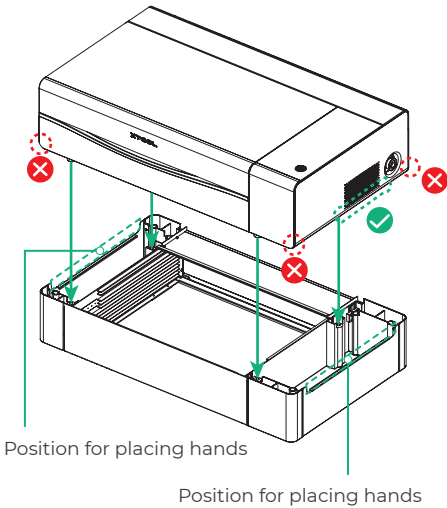
Jaw chuck mode




Roller mode

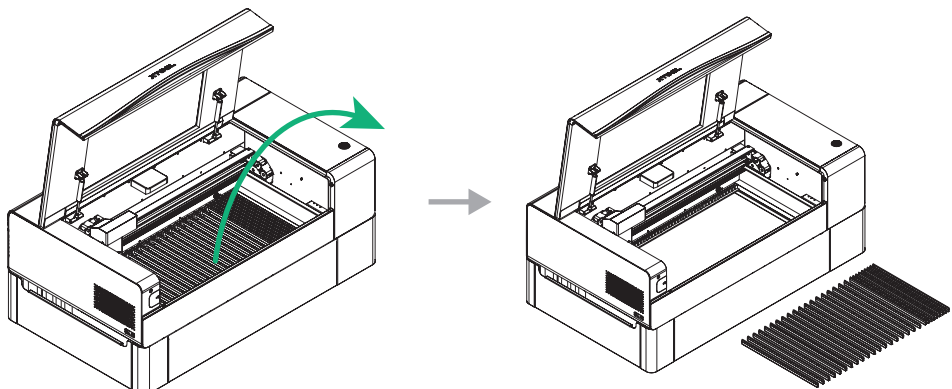
The following is a detailed guide on how to install xTool RA3 in xTool P2S.

1 Place xTool P2S on the riser base.

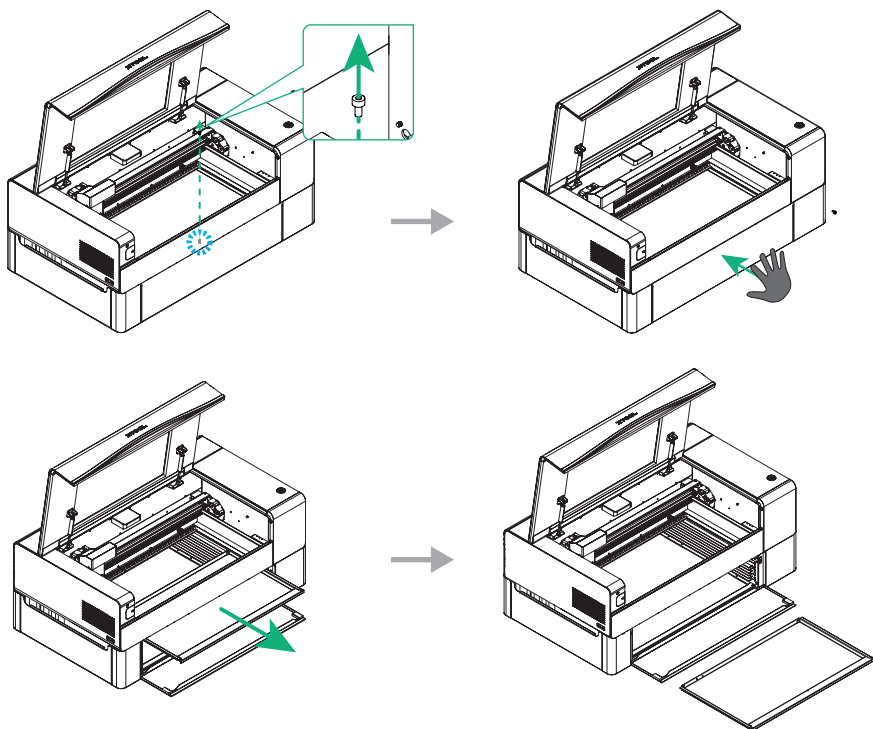


 The riser base features hand relief recesses on both the left and right sides. To place xTool P2S on the riser base, ensure that at least two people lift the machine. Always grip the sides, not the corners, to prevent hand injuries.

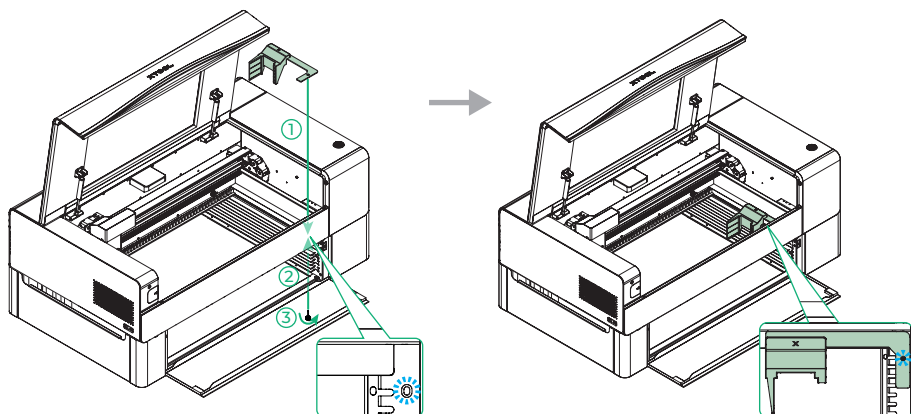
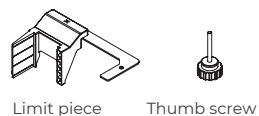
2 Remove the slats.



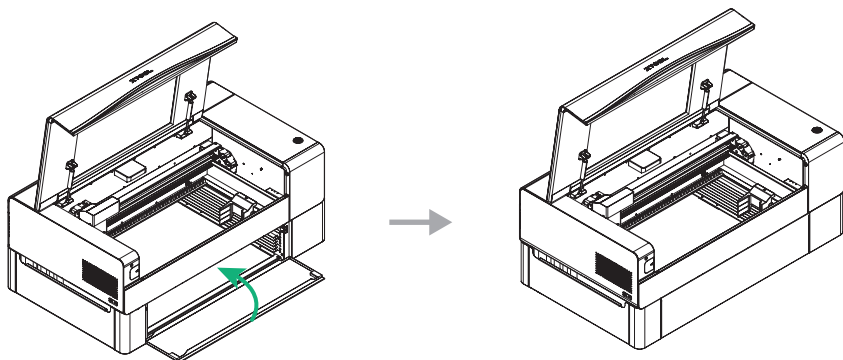
- 3** Remove the screw securing the baseplate, open the door panel, and then take out the baseplate.



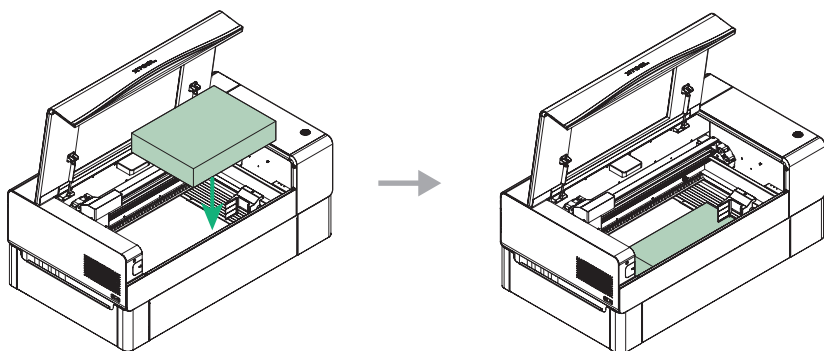
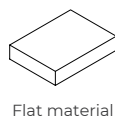
- 4** Use the thumb screw to install and secure the limit piece to the designated position on xTool P2S.



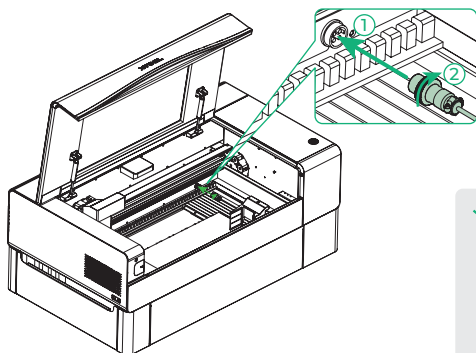
- 5** Close the door panel.



- 6** Place a wooden board or other flat materials inside xTool P2S to raise xTool RA3 to an appropriate height.



- 7** Insert the aviation connector into the extension port of xTool P2S and secure it by rotating the collar clockwise.



Align the highlighted parts.

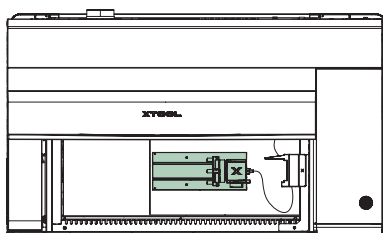
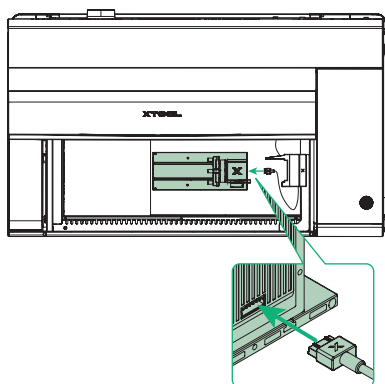
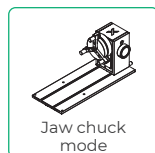


Extension port

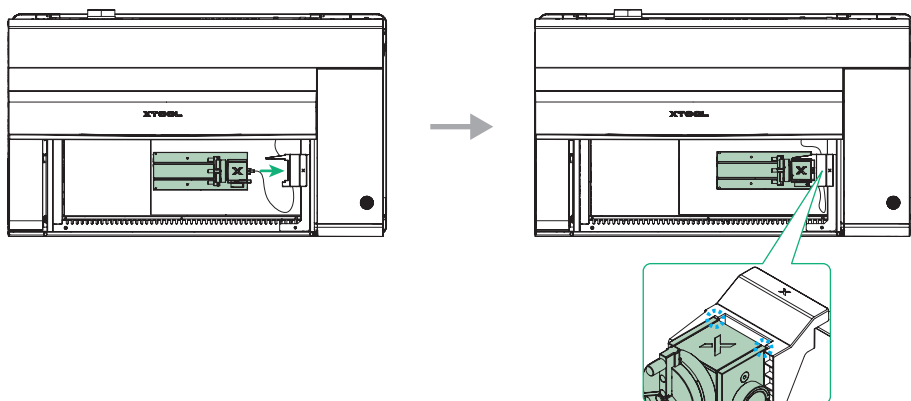


Aviation connector cable

- 8** Place xTool RA3 on the flat material, then insert the other end of the aviation connector cable into the port on the back of the power module of xTool RA3. The following illustrations use the jaw chuck mode of xTool RA3 as an example.



9 Secure xTool RA3 to the limit piece.



The method for securing xTool RA3 in roller mode is shown in the illustrations below.

