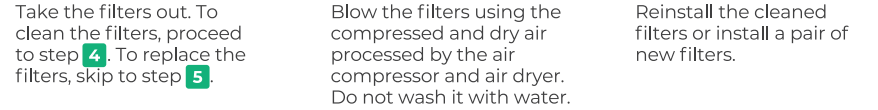
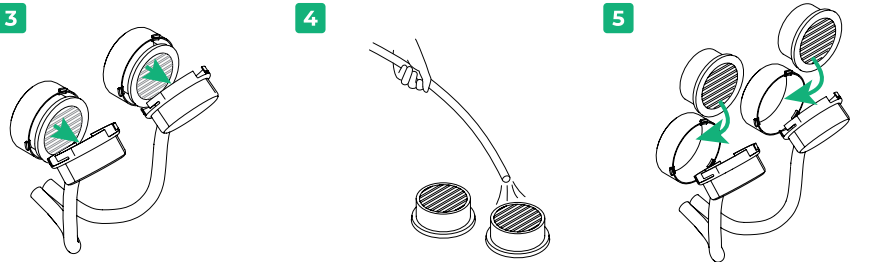
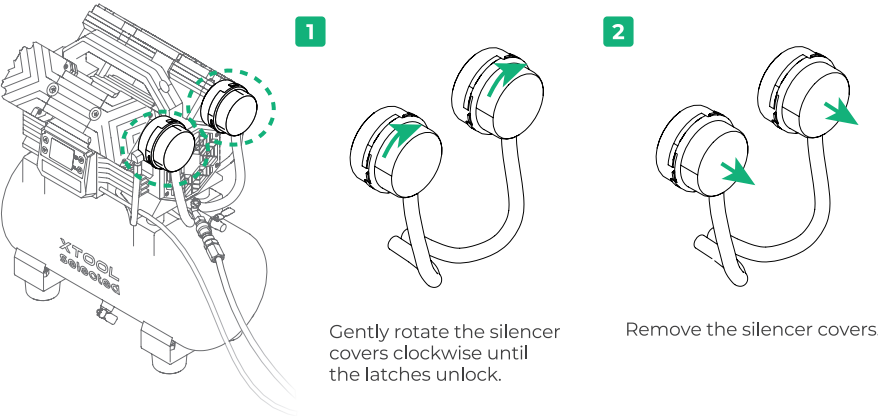


Clean or replace the silencer filters



Reattach the silencer covers. Rotate counterclockwise to lock the latches in place. Complete

FAQ

- 1 What should I do if the solenoid valve cannot be installed properly?**
Wrap PTFE tape around the threaded pipe of the solenoid valve before installation. If the pipe doesn't align properly to allow the dryer to lie flat or drain, adjust the tape thickness accordingly.
- 2 What should I do if the air volume and pressure are insufficient?**
 - Inspect all tube and pipe connections. If you find any leaks, apply tape to the threaded ends to ensure a secure connection.
 - If xTool MetalFab CNC Cutter is connected and the xTool software displays an air pressure lower than 0.4 MPa, first verify the air compressor is set to 1 MPa in Fast mode as recommended. If the settings are correct but pressure remains low, inspect all tube connections for leaks and check the compressor for damage.

- 3 Is it possible to shorten the tube connecting to the welder?**
It is not recommended. A shorter tube may not effectively condense water, which could disrupt airflow to the welder.

- 4 What should I do if water enters the tube connecting the welder?**
If the processing result is poor and water droplets are found on the lens protector, follow these steps to resolve the issue:
(1) Stop using the welder's cutting function immediately.
(2) Check the air dryer to ensure it is functioning properly.
(3) Allow the air dryer to run and continue drying the air.
(4) After some time, place a dry piece of cardboard near the welder head nozzle. If the cardboard remains dry, the air dryer is now supplying dry air.
(5) Replace the lens protector and resume processing.

XTOOL
selected

XTOOL selected

Air Compressor



Quick Start Guide

Kurzanleitung | Guía de inicio rápido | Guide de démarrage rapide
| Guida rapida | Korte handleiding | Manual de referência rápida
| クイックガイド | 빠른 시작 가이드 | 快速入門指南 | 快速使用指南

Multi-language versions and more information

To find user guides in multiple languages and more help, please visit support.xtool.com/article/1968 or scan the QR code.

Mehrsprachige Versionen und weitere Informationen

Falls Sie Benutzerhandbücher in mehreren Sprachen suchen und weitere Hilfe benötigen, besuchen Sie bitte support.xtool.com/article/1968 oder scannen Sie den QR-Code.

Versiones multilingües y más información

Para encontrar guías de usuario en varios idiomas y más ayuda, visite support.xtool.com/article/1968 o escanee el código QR.

Versions multilingues et informations complémentaires

Pour trouver des guides de l'utilisateur dans plusieurs langues et accéder à une assistance supplémentaire, veuillez consulter support.xtool.com/article/1968 ou scanner le code QR.

Versioni multilingue e ulteriori informazioni

Per manuali dell'utente in altre lingue o ulteriore assistenza, visitare support.xtool.com/article/1968 o scansionare il codice QR.

Meertalige versies en meer informatie

Ga voor gebruikershandleidingen in meerdere talen en meer hulp naar support.xtool.com/article/1968 of scan de QR-code.

Versões multi-idiomas e mais informações

Para encontrar manuais do utilizador em idiomas múltiplos e mais ajuda, visite, se faz o favor, support.xtool.com/article/1968 ou leia o código QR.

複数言語バージョンと詳細情報

複数言語のユーザーガイドと詳細なヘルプについては、support.xtool.com/article/1968 にアクセスするか、QRコードをスキャンしてください。

다중 언어 버전 및 추가 정보

다중 언어로 된 사용 설명서와 추가 도움말을 찾으려면 support.xtool.com/article/1968 페이지를 방문하거나 QR 코드를 스캔하십시오.

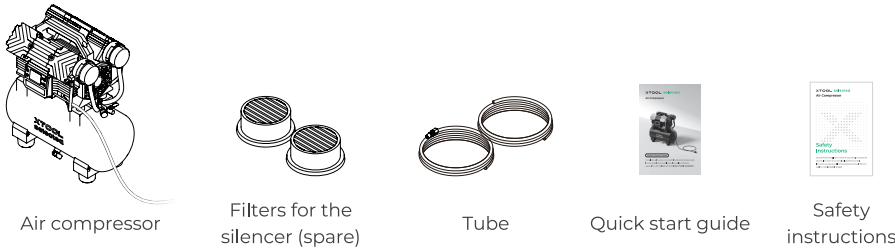
多語言版本及更多資訊

如需取得其他語言版本的使用者指南或幫助資訊，請前往 support.xtool.com/article/1968 或掃描 QR code。

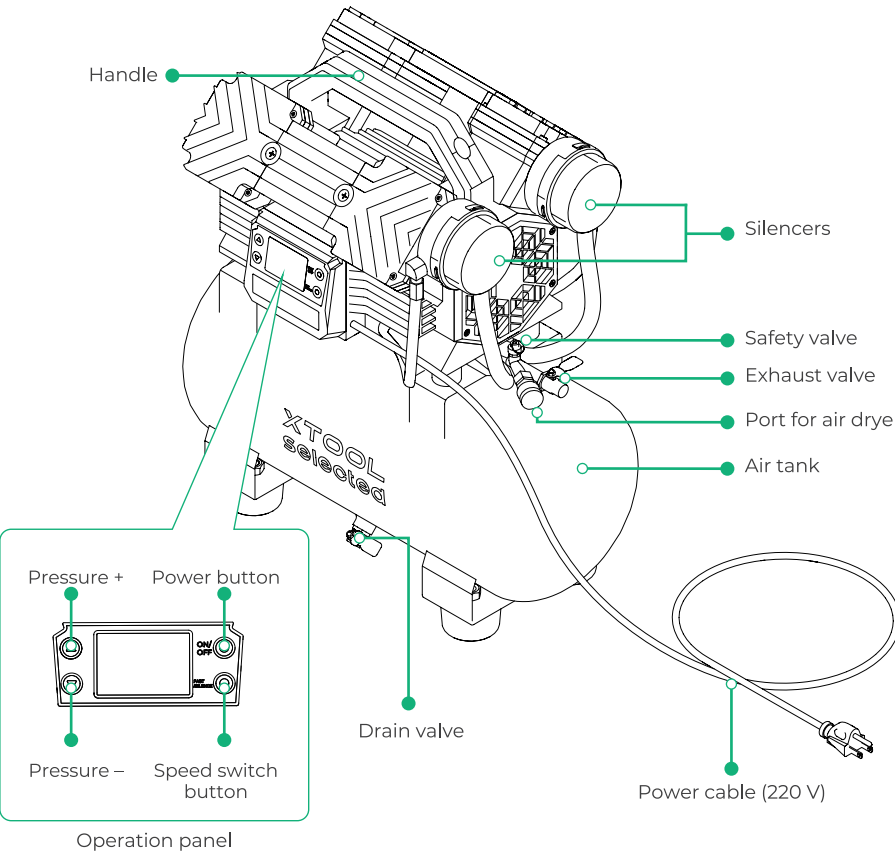
多语言版本及更多信息

如需获取其他语言版本的用户指南或更多帮助信息，请访问 support.xtool.com/article/1968 或扫描二维码。你也可以访问 yunique.com/makeblock-help-center-zh/xtool-accessories/air-compressor 查看在线帮助。

List of items



Meet Air Compressor



Product specifications

PSI	CFM	Operating pressure (MPa)	Rated power (W)
145	12.4	0.3-1.0	2200
Tank capacity (L)	Operating voltage (V)	Machine net weight (kg)	Dimensions (W × H × D) (mm)
20	220	16	460 × 530 × 270

Use Air Compressor

When using with an air dryer, you must turn on the air dryer before starting the air compressor.

Option 1: Online help



support.xtool.com/article/1968

Option 2: Printed operation guide

The air compressor is designed to be used with an air dryer. For the printed operation guide, please refer to the air dryer's *Quick Start Guide*.

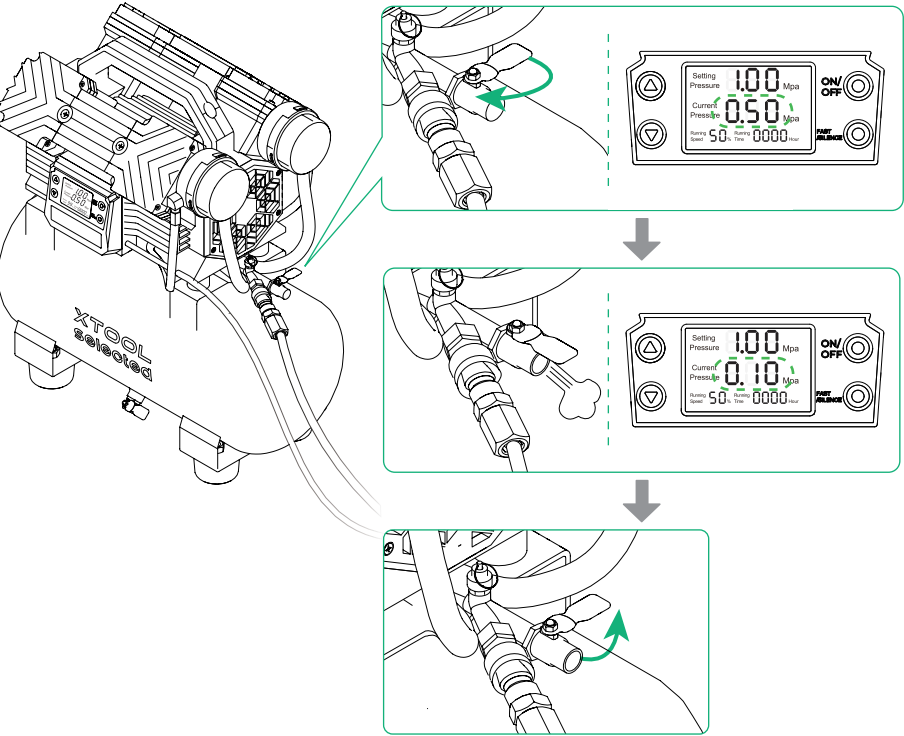
Maintenance

- Before performing any maintenance, disconnect the power supply and release all air to avoid potential hazards.
- Wait until the machine has completely cooled down before maintenance to prevent burns.

Part	Maintenance activity	Frequency
Air tank	Discharge of waste water	Once per day
Filters of the silencers	Clean or replace	After use of 100 hours
Safety valve	Check gas release	Every week

Discharge of waste water

(1) Check the pressure level. If it exceeds 0.1 MPa, open the exhaust valve to release air until the pressure drops below 0.1 MPa or lower.



- Power off the air compressor and disconnect the power supply.
- Open the drain valve to release water. Once draining is complete, close the drain valve.

