

XTOOL

M2 CMYK Inkjet Module



Statement	-----	01
List of items	-----	01
Install the ink cartridge	-----	02
Install xTool M2 CMYK Inkjet Module	-----	06
Maintenance and care	-----	09
Safety instructions and statements	-----	11
After-sales services	-----	12

Statement

Thank you for choosing xTool products!

If you use the product for the first time, read carefully all the accompanying materials of the product to improve your experience with it. If you do not use the product according to the instructions and requirements of the Manual, or mis-operate the product due to misunderstanding, etc., the Company shall bear no responsibility for any loss resulting therefrom.

The Company has collated the content of the Manual rigorously and carefully, but errors or omissions may remain.

The Company is committed to continuously improving product functions and service quality, and therefore reserves the right to change any product or software described in the Manual and the content of the Manual at any time.

The Manual is intended to help you use the product properly and does not include any description of hardware and software configuration. For product configuration, refer to the related contract (if any) and packing list, or consult your distributor. Images in the Manual are for reference only and the actual product may vary.

Protected by copyright laws and regulations, the Manual shall not be reproduced or transcribed in any way, or be transmitted on any wired or wireless network in any manner, or be translated into any language, or be modified in any way, such as content, image, or layout modification, without the prior written authorization of the Company.

The Company is committed to continuously improving the product and related materials. The product and the Manual are subject to change, and updates can be found at xtool.com.

Please do not attempt repairs without contacting xTool Support.

List of items



xTool M2 CMYK Inkjet Module



Ink cartridge



Bottom cap



Moisturizing liquid



Bottom cap retainer plate



Screw



Calibration card (A5)



Ferrite core

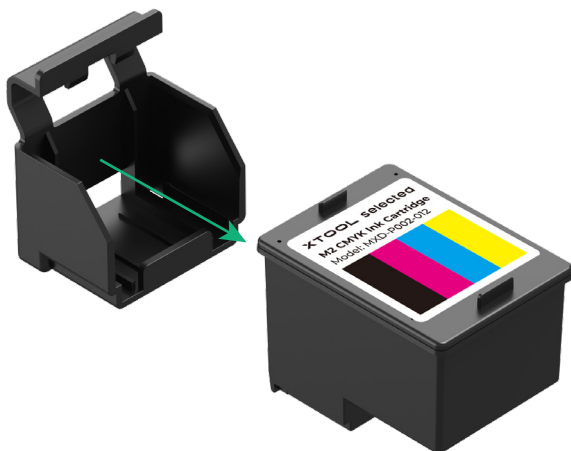


User manual

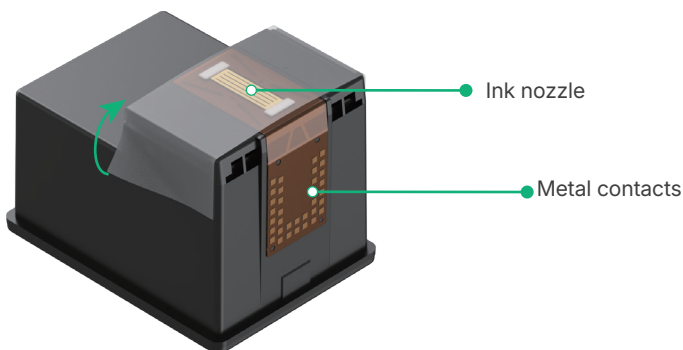
Install the ink cartridge

1 Prepare the ink cartridge

(1) Take out the ink cartridge.

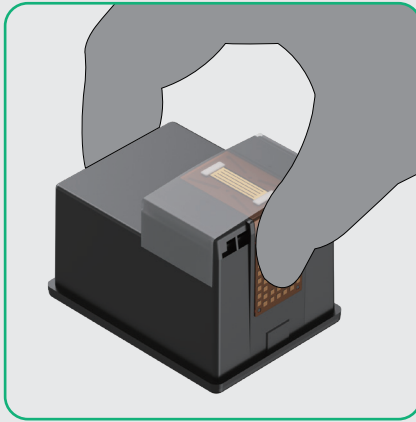


(2) Peel off the protective film.

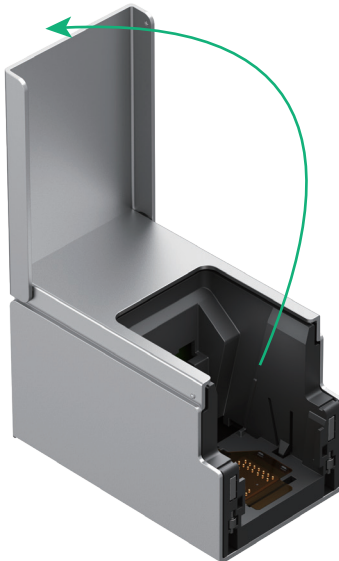
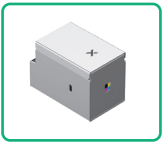




DO NOT touch the metal contacts on the bottom of the ink cartridge.

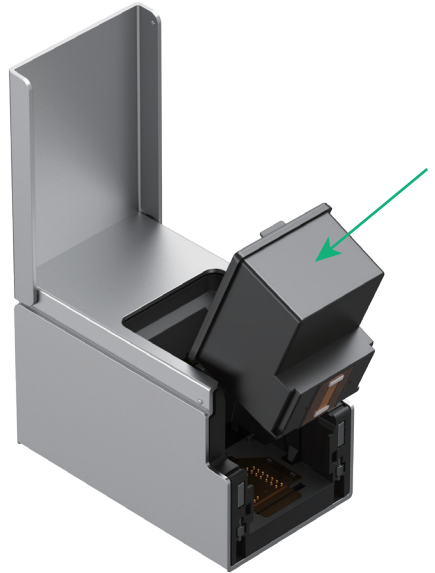
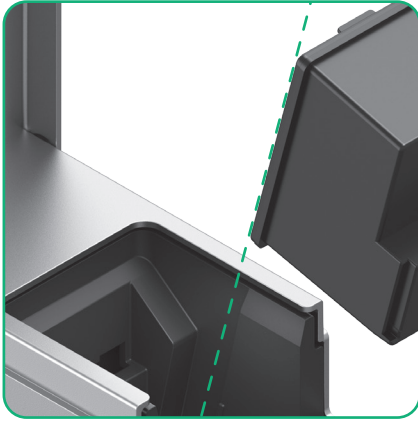


2 Open the front cover

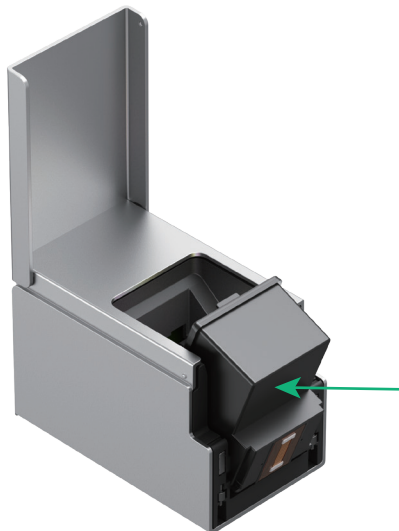


3 Install the ink cartridge

(1) Align the ink cartridge with the inner track of xTool M2 CMYK Inkjet Module. Gently push the cartridge in at approximately a 45° angle.

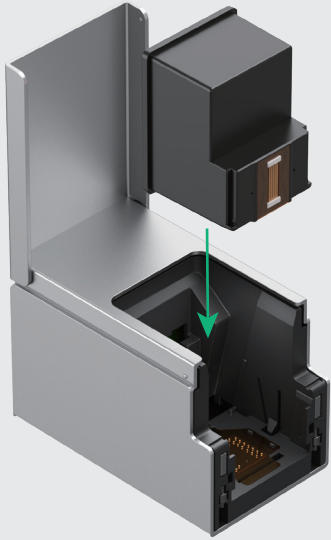


(2) Once the cartridge is fully inserted, press it inward gently. You will hear a "click" sound when the cartridge is properly installed.





- **DO NOT** insert the cartridge vertically, as this may cause jamming.
- **DO NOT** force the installation. If you encounter resistance, adjust the angle and try again.

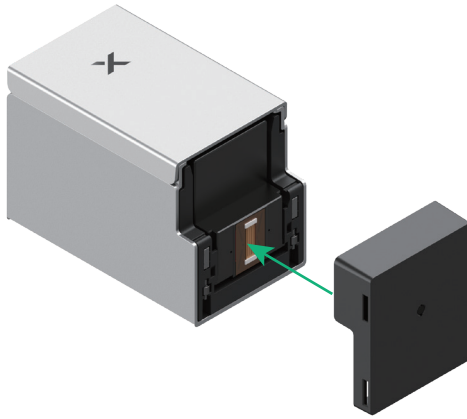


4 Close the front cover



5 Install the bottom cap

Attach the bottom cap to the bottom of xTool M2 CMYK Inkjet Module, ensuring it is magnetically secured in place.



- The bottom cap is secured to the module via built-in magnets.
- Material thickness > 2.6 cm: Processing not supported.
2 cm ≤ Material thickness ≤ 2.6 cm: Manually remove the bottom cap.
Material thickness < 2 cm: Manual removal of the bottom cap is not required.

Install xTool M2 CMYK Inkjet Module

Before installing xTool M2 CMYK Inkjet Module, make sure:

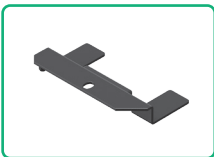
- xTool M2 is turned off.
- Any other modules are removed from xTool M2.
- Laser module calibration has been completed in xTool software.

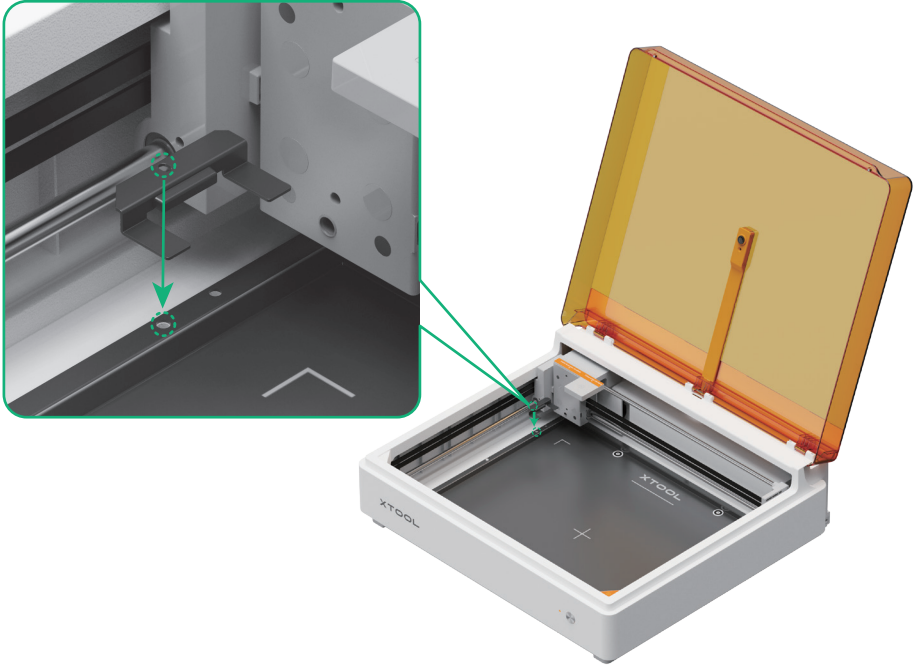
1 Install the bottom cap retainer plate

(1) Align the bottom cap retainer plate with the reserved mounting hole on the upper-left side of xTool M2's baseplate.

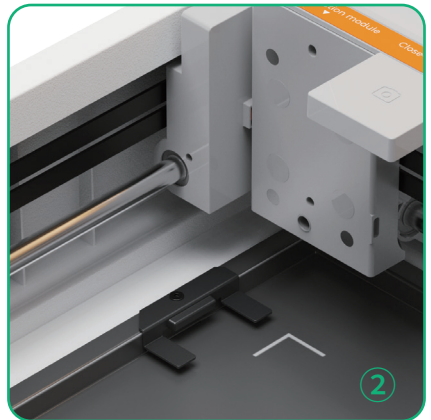
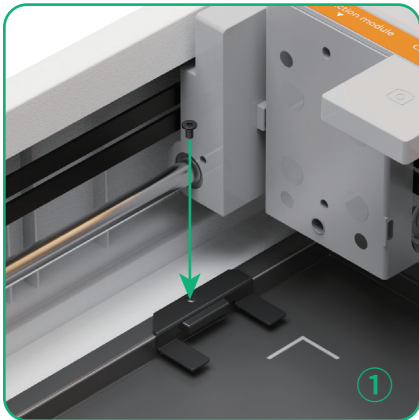


Remove the pre-installed screw first.



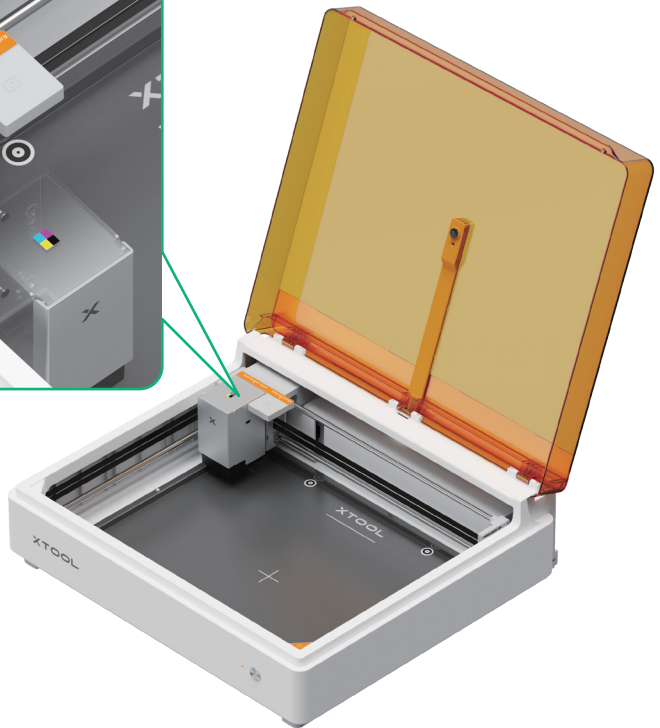
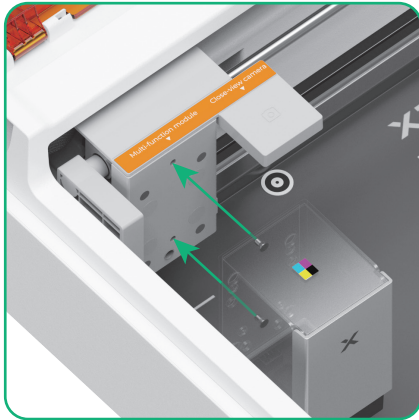
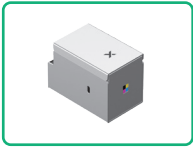


(2) Use a hex screwdriver to securely fasten the retainer plate.



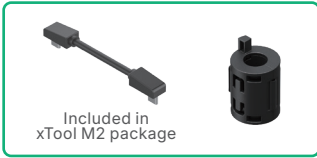
2 Install the inkjet module

Attach xTool M2 CMYK Inkjet Module to the multi-function holder of xTool M2, ensuring it is magnetically secured in place.

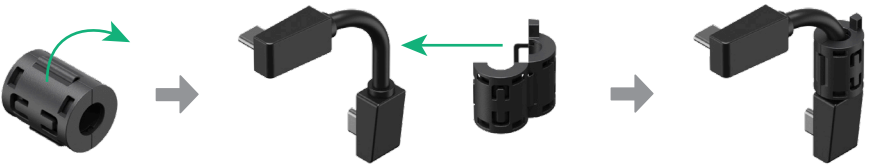


The module attaches to the multi-function holder via built-in magnets.

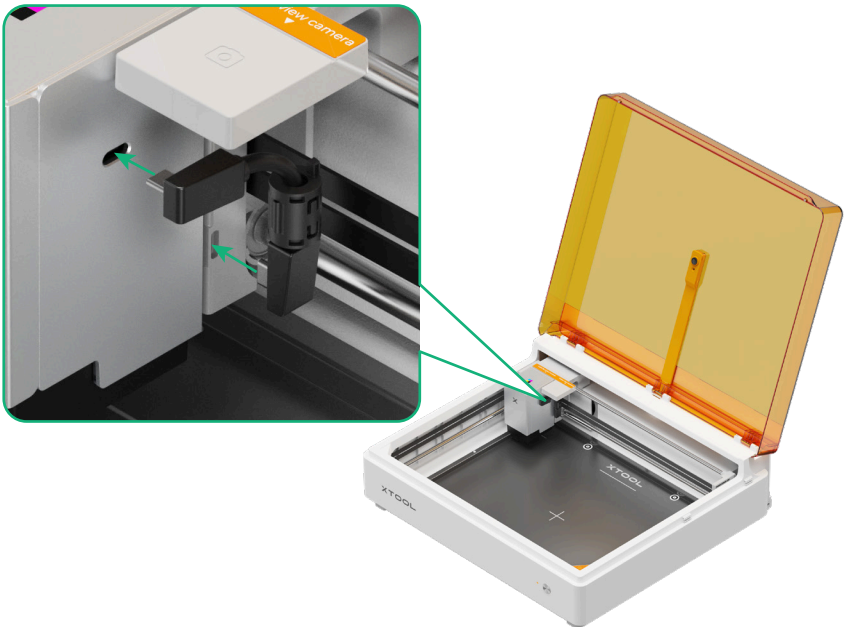
3 Connect the device and the module



(1) Attach the ferrite core to the module connection cable.



(2) Connect xTool M2 CMYK Inkjet Module to the multi-function module holder via the module connection cable.

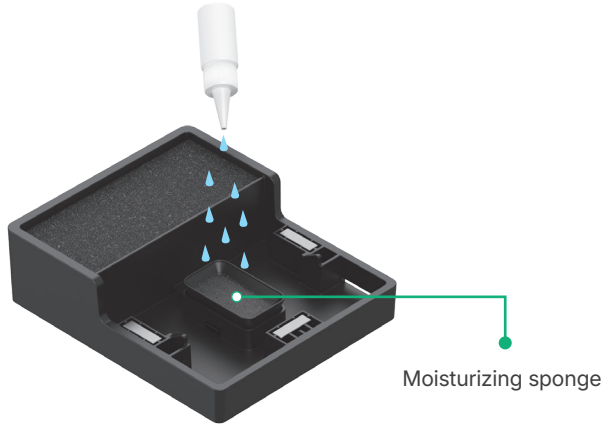


Maintenance and care

Moisturizing sponge: The bottom cap contains a built-in moisturizing sponge. Add moisturizing liquid (or purified/distilled water) regularly.



- Principle: Keep the sponge **moist**. Avoid overfilling or accumulation of liquid.
- Excessive liquid may cause color mixing at the ink nozzle or printing issues.



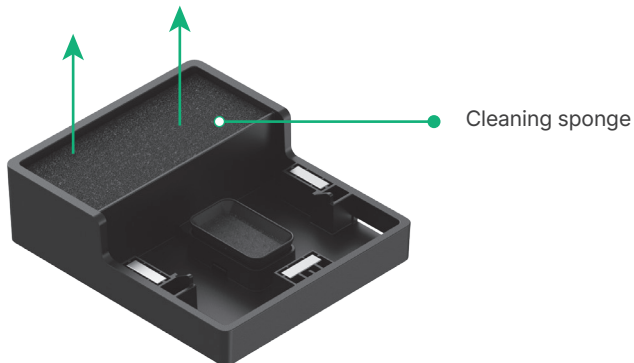
Cleaning sponge: The bottom cap also contains a cleaning sponge. Remove and clean it regularly.

- Rinse the sponge with clean water to remove residual ink.
- Wring out excess water and reinstall the sponge directly—complete drying is not required.



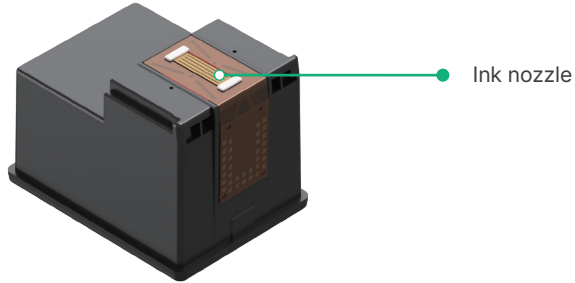
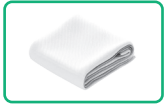
Cleaning frequency:

- Before use: Check if the sponge is dirty.
- Extended downtime: Clean at least once per month.
- Regular operation: Adjust cleaning frequency based on inkjet usage intensity. Excessive ink buildup without timely cleaning may affect print quality.



Ink nozzle: Avoid exposing the ink nozzle to air for extended periods.

■ If residual ink or dust is present on the nozzle surface, gently wipe it with a lint-free cloth (not included).



Safety instructions and statements

■ Recommended operating environment:

Operating temperature: 15-35°C (59°F – 95°F)

Operating humidity: 40-60% RH

■ Do not store the ink cartridge in environments with drastic temperature or humidity changes, or in high-temperature/high-humidity areas.

■ Keep the ink cartridge and the module out of reach of children.

■ Avoid direct sunlight exposure to the ink cartridge.

■ Do not touch the metal contacts or the ink nozzle on the cartridge.

■ Do not peel off the labels on the side of the ink cartridge.

■ Do not install or remove the ink cartridge while the device is powered on.

■ Ink is not edible.

■ If ink contacts the skin or eyes, rinse immediately with plenty of water. Seek medical attention if discomfort persists.

EU declaration of conformity

Hereby, Makeblock Co., Ltd., declares that this product is in compliance with the essential requirements and other relevant provisions of Directive RED 2014/53/EU and the RoHS Directive 2011/65/EU & (EU) 2015/863. The full text of the EU declaration of conformity is available at the following Internet address: support.xtool.com/article/2084

Disposal & recycling information



This symbol indicates that this product shall not be treated as household waste. Instead, it shall be handed over to the applicable collection point for the recycling of electrical and electronic equipment.

EU responsible person

EU responsible person: Makeblock Europe B.V.

Address: Westplein 12, 3016 BM, Rotterdam, the Netherlands

E-mail address: support@info.xtool.com

FCC statement

This device complies with Part 15 of the FCC Rules. Operation is subject to the following two conditions:

(1) This device may not cause harmful interference, and (2) this device must accept any interference received, including interference that may cause undesired operation.

Warning: Changes or modifications not expressly approved by the party responsible for compliance could void the user's authority to operate the equipment.

NOTE: This equipment has been tested and found to comply with the limits for a Class B digital device, pursuant to Part 15 of the FCC Rules. These limits are designed to provide reasonable protection against harmful interference in a residential installation.

This equipment generates uses and can radiate radio frequency energy and, if not installed and used in accordance with the instructions, may cause harmful interference to radio communications.

However, there is no guarantee that interference will not occur in a particular installation. If this equipment does cause harmful interference to radio or television reception, which can be determined by turning the equipment off and on, the user is encouraged to try to correct the interference by one or more of the following measures:

- Reorient or relocate the receiving antenna.
- Increase the separation between the equipment and receiver.
- Connect the equipment into an outlet on a circuit different from that to which the receiver is connected.
- Consult the dealer or an experienced radio/TV technician for help.

Responsibility party: XTL US INC.

Responsibility party address: 2019 LEGHORN STREET, MOUNTAIN VIEW, CA 94043

Website: support.xtool.com

IC statement

This digital apparatus complies with CAN ICES (B) / NMB (B).

Déclaration d'Industrie Canada Cet appareil numérique est conforme à la norme CAN ICES (B) / NMB (B) du Canada.

After-sales services

For technical support, contact us at support@info.xtool.com.

For more information about after-sales services, visit support.xtool.com.

*Some language versions are translated by artificial intelligence (AI). If there are any inaccuracies or ambiguities, please contact us promptly. We will verify and optimize the content as soon as possible.

XTOOL