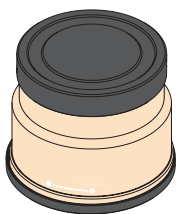


Inner Engraving Pack User Manual

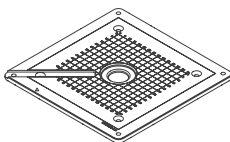
Safety warning

This product contains small parts. Keep out of reach of children to prevent accidental swallowing.

List of items



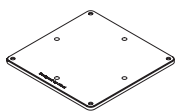
Inner engraving lens



Riser top plate



Riser support plate



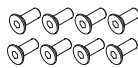
Riser base plate



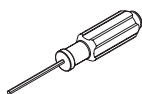
Positioning piece



Thumb screw



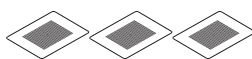
Screw M3*8



Screwdriver
2 mm



Glass block



Calibration card

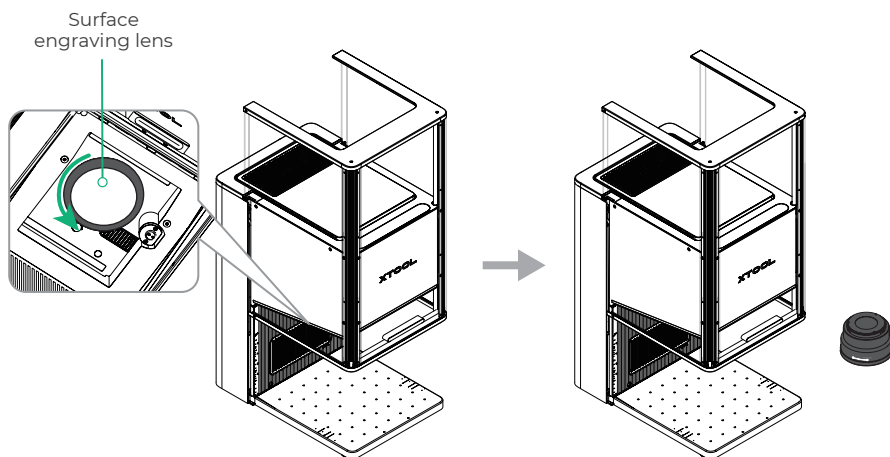


User Manual

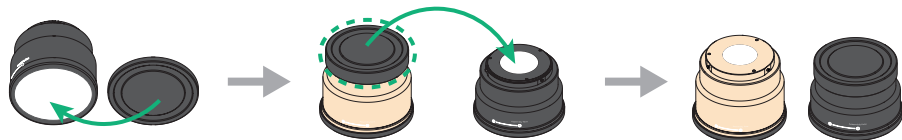
Installation guide

Replace the lens

- 1 Remove the pre-installed surface engraving lens by rotating it counterclockwise.



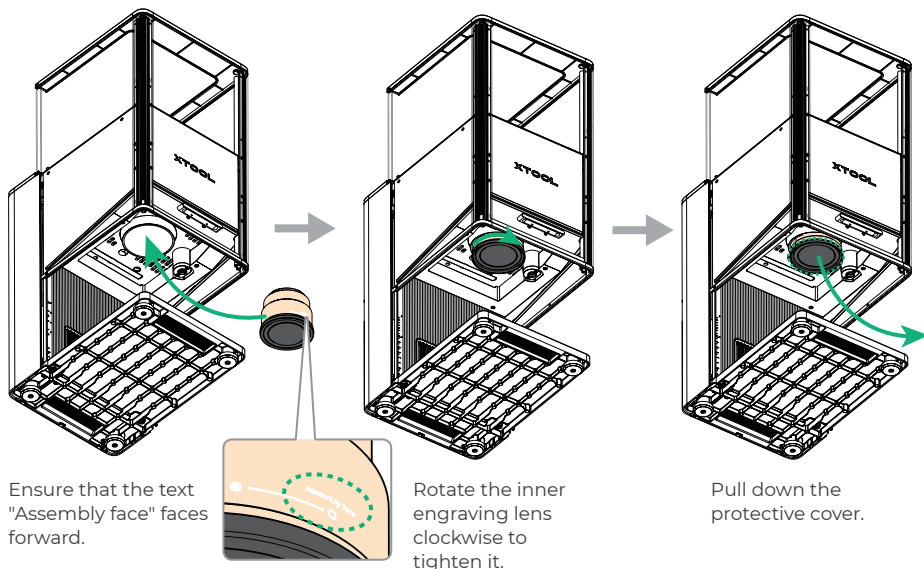
- 2 To prevent the lens from getting dirty, attach the original protective cover of the surface engraving lens to its bottom. Next, remove the top protective cover from the inner engraving lens and attach it to the top of the surface engraving lens.



- 3** Rotate the inner engraving lens clockwise to install it onto the main unit. After fixing it, pull down its bottom protective cover.



Do not touch the glass surface of the lens, as this may cause dirt and affect engraving quality. If the lens surface gets dirty, wipe it clean with a lint-free cloth dampened with alcohol.

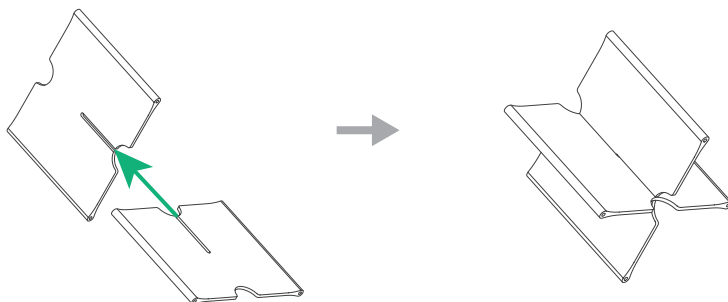


Install the riser

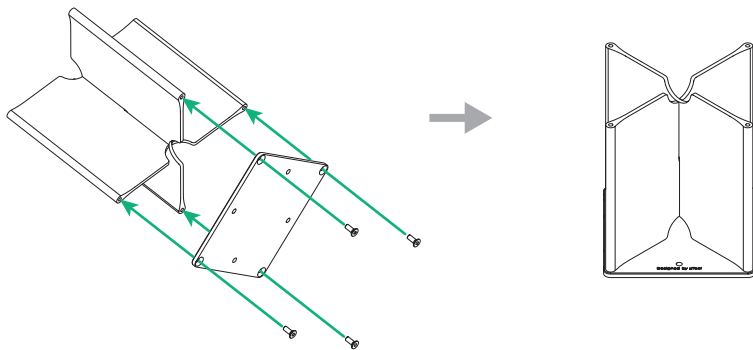
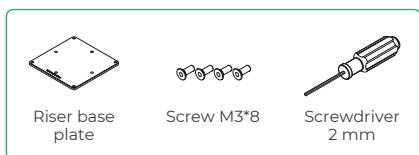
- 1** Join the two riser support plates together.



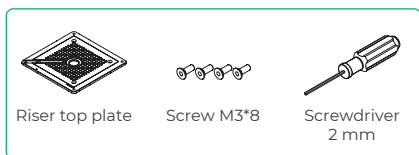
Riser support plate



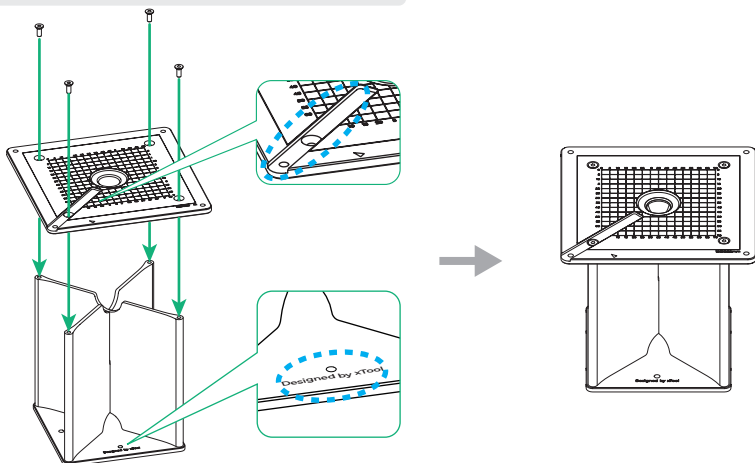
2 Secure the riser support plates to the riser base plate.



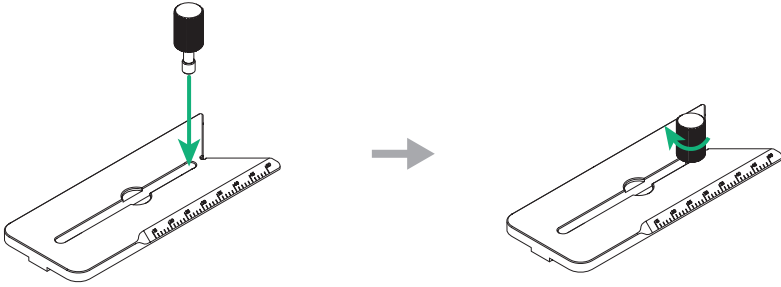
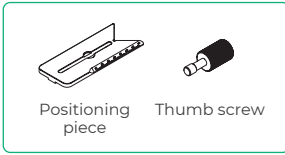
3 Secure the riser top plate onto the riser support plates.



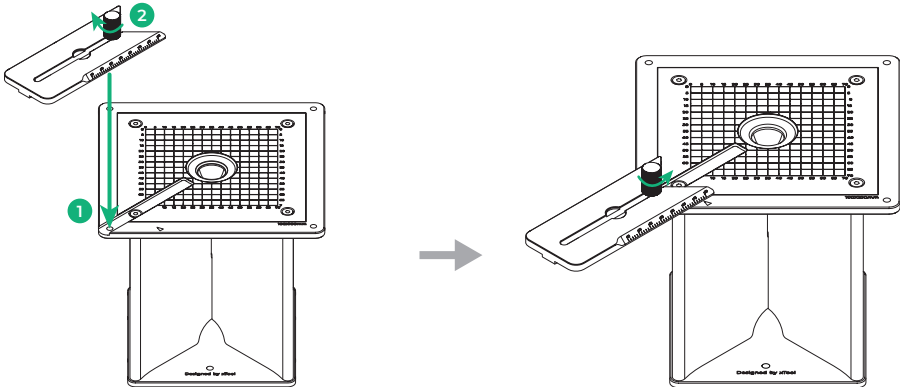
Install the riser top plate in the correct orientation.



4 Install the thumb screw into the positioning piece.



5 Install the positioning piece onto the riser.



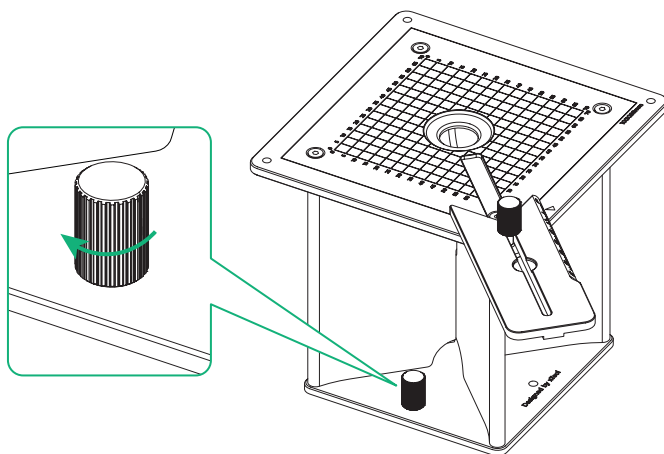
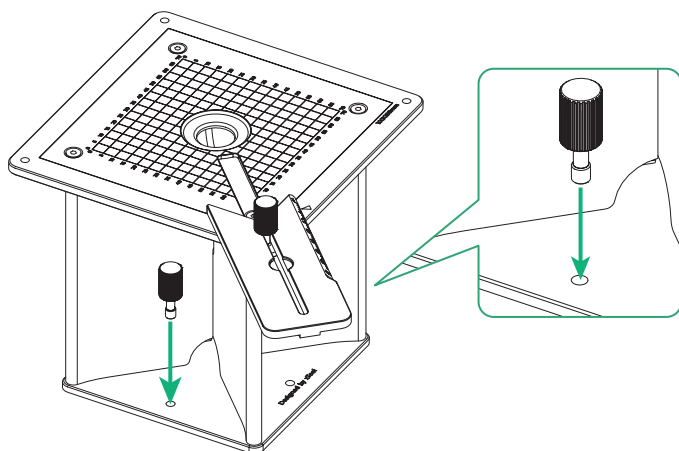
Tighten the thumb screw clockwise.

Loosen the thumb screw slightly by turning it counterclockwise, allowing the positioning piece to slide along the groove of the top plate.

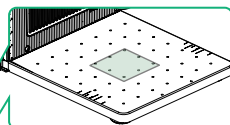
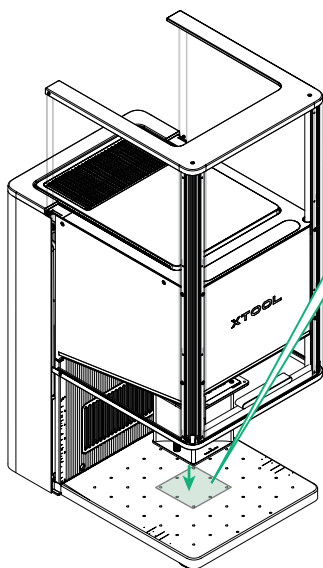
6 Install the two thumb screws on both sides of the riser base plate.



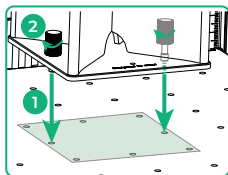
Thumb screw



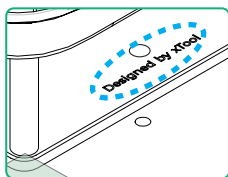
- 7** Install the riser onto the designated position on the main unit's baseplate. Tighten the two thumb screws on the riser base plate.



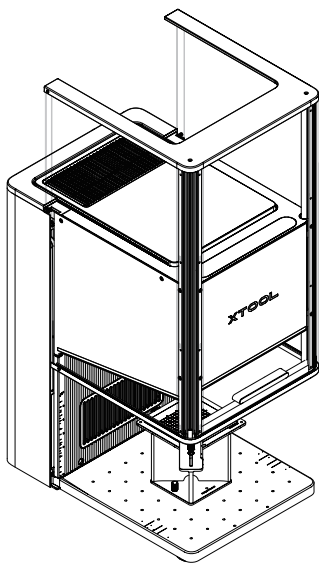
Riser installation area



Tighten the thumb screws.



Ensure that the text on the riser base plate faces you.



Perform inner engraving with the software

(1) Visit s.xtool.com/software to download and install the software developed by xTool.



(2) Use the USB cable to connect xTool F2 Ultra UV to your computer, and then connect xTool F2 Ultra UV in the software. Follow the on-screen instructions to perform inner engraving.

For details about how to use the software to control xTool F2 Ultra UV for inner engraving, scan the QR code or visit the link.



support.xtool.com/product/70