

XTOOL | F2 Ultra UV

Quick Start Guide



Contents

List of items	01
Meet xTool F2 Ultra UV	02
Install xTool F2 Ultra UV	05
Use xTool F2 Ultra UV	08
Use accessories	11
Maintenance	12

* The English version is the original instructions verified by the manufacturer.

List of items



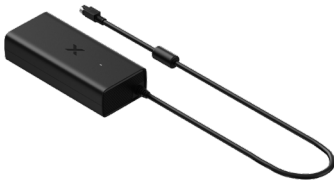
xTool F2 Ultra UV



Touchscreen controller



Pipe



Power adapter



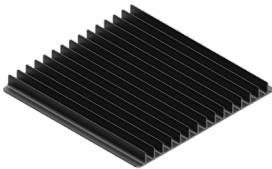
Power cable



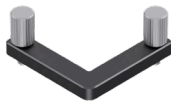
USB cable



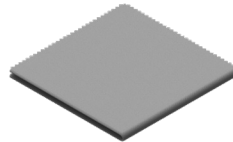
Key



Slatted panel



L-shaped positioning piece



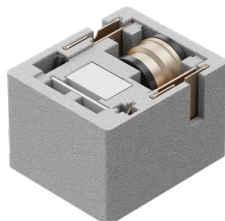
Lint-free cloth



Screwdriver 2.5 mm



Surface engraving material pack



Inner engraving pack



Quick Start Guide



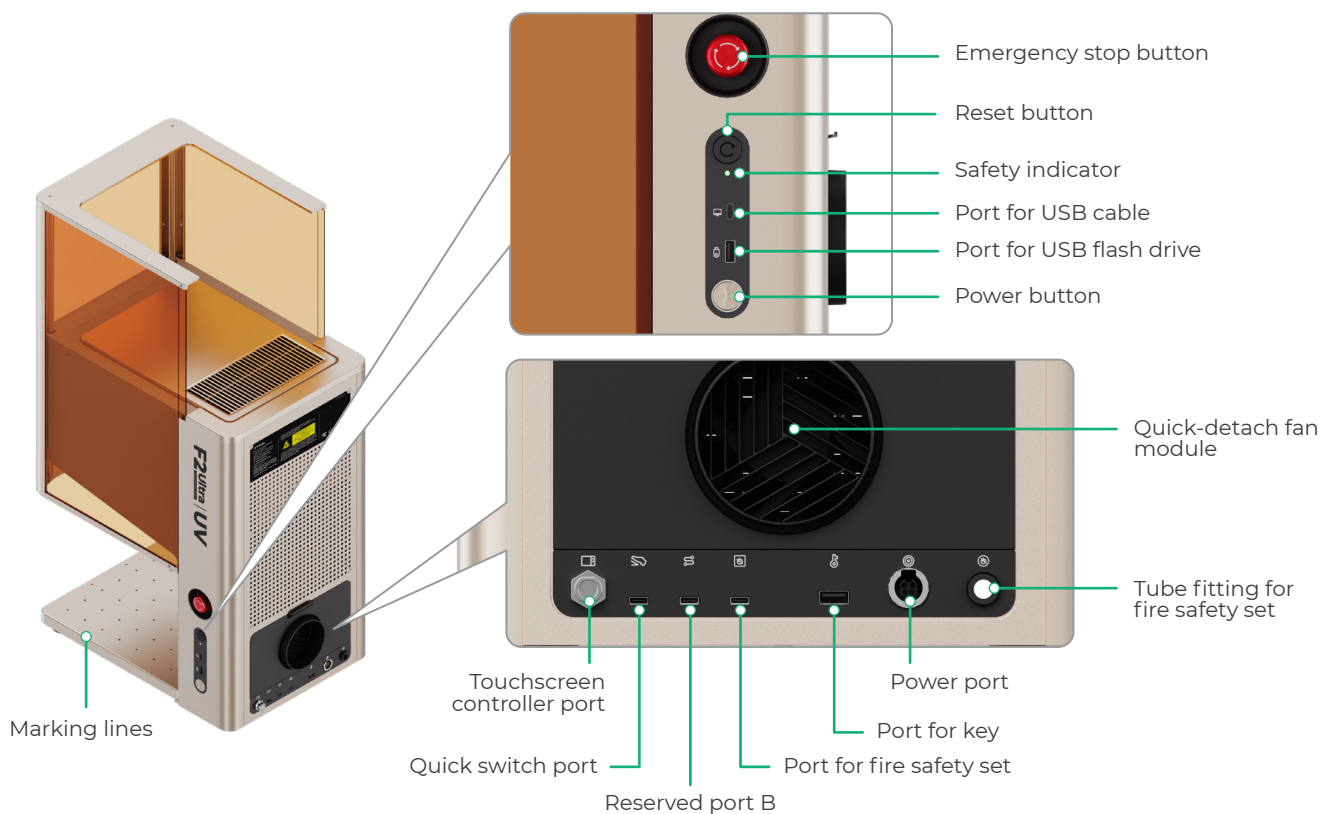
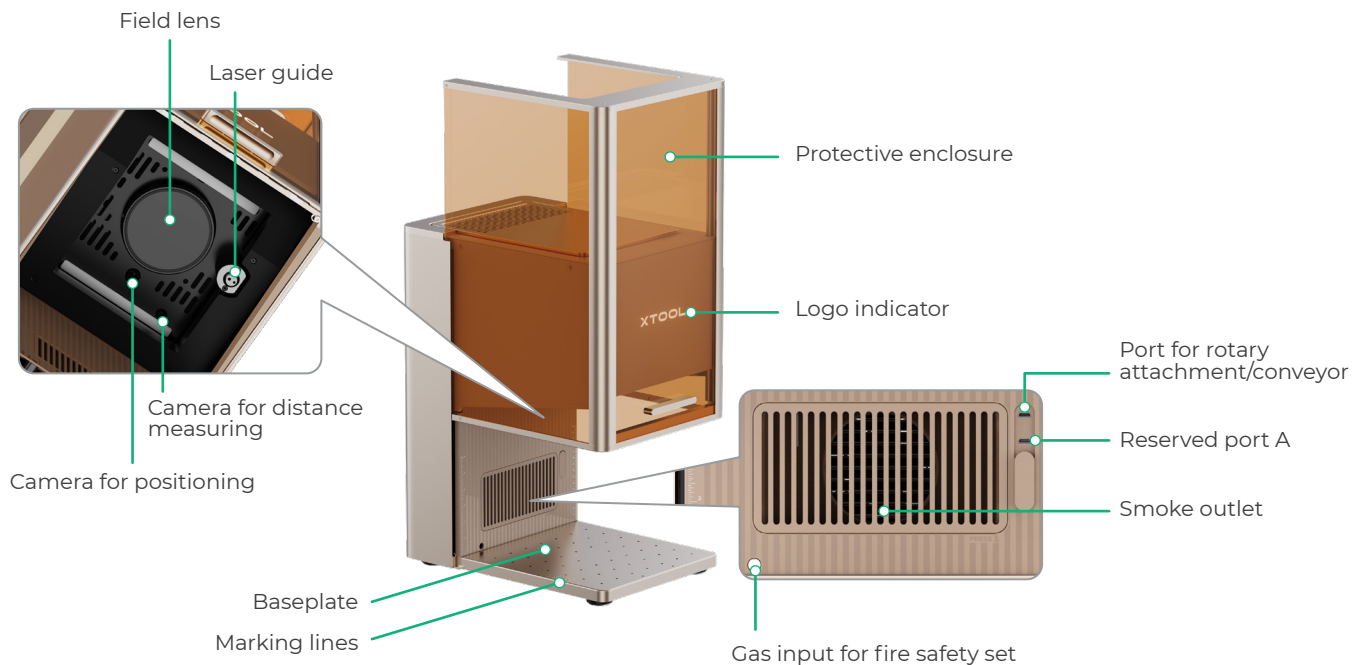
Safety Instructions



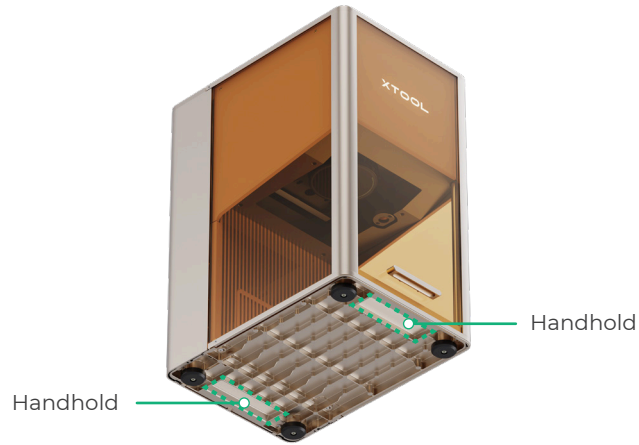
The power cable may vary according to kits. The illustration is for reference only.

Meet xTool F2 Ultra UV

Product structure

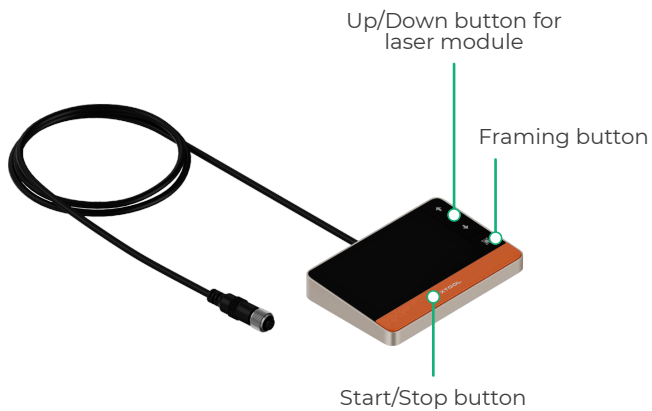


Reserved port A and reserved port B function differently and can not be used interchangeably.



By gripping on the handholds, you can easily move the machine.

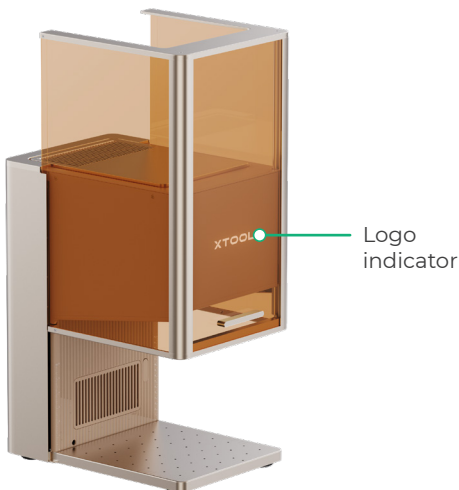
Touchscreen controller



- **Up/Down button for laser module:** Lifts or lowers the laser module during manual focusing.
- **Framing button:** Press it once to start or stop framing.
- **Start/Stop button:** Press it once to start or stop material processing; press it twice consecutively to repeat the last processing task.

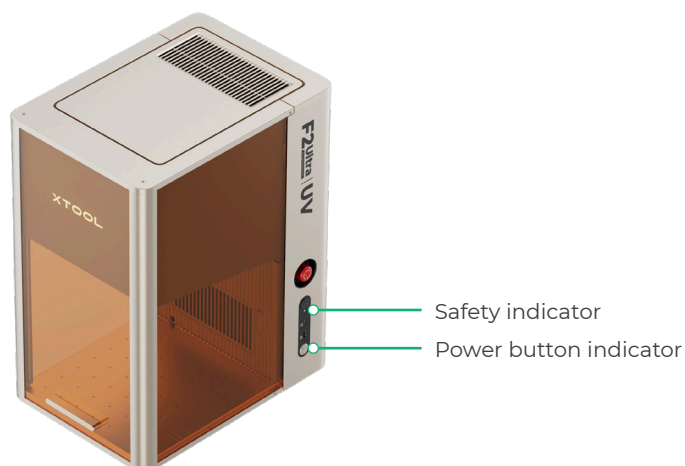
Common machine states and indicator display

The logo indicator states are described as follows:



Indicator display		Machine state
XTOOL	Solid on	Powered on
-XTOOL-	Blinking slowly	Processing
-XTOOL-	Blinking rapidly	Setting network / Upgrading firmware
XTOOL	Going off	Sleeping / Powered off

The side indicator states are described as follows:



Indicator display	Power control components status	Machine state
<ul style="list-style-type: none"> ● Safety indicator: red ● Power button indicator: off 	Emergency stop button pressed	Powered off
<ul style="list-style-type: none"> ● Safety indicator: off ● Power button indicator: off 	(1) Emergency stop button released, and reset button not pressed; or (2) Power not connected	Powered off
<ul style="list-style-type: none"> ● Safety indicator: green ● Power button indicator: off 	Emergency stop button released, reset button pressed, and power button not pressed	Powered off
<ul style="list-style-type: none"> ● Safety indicator: green ● Power button indicator: white 	Emergency stop button released, reset button pressed, and power button pressed	Powered on

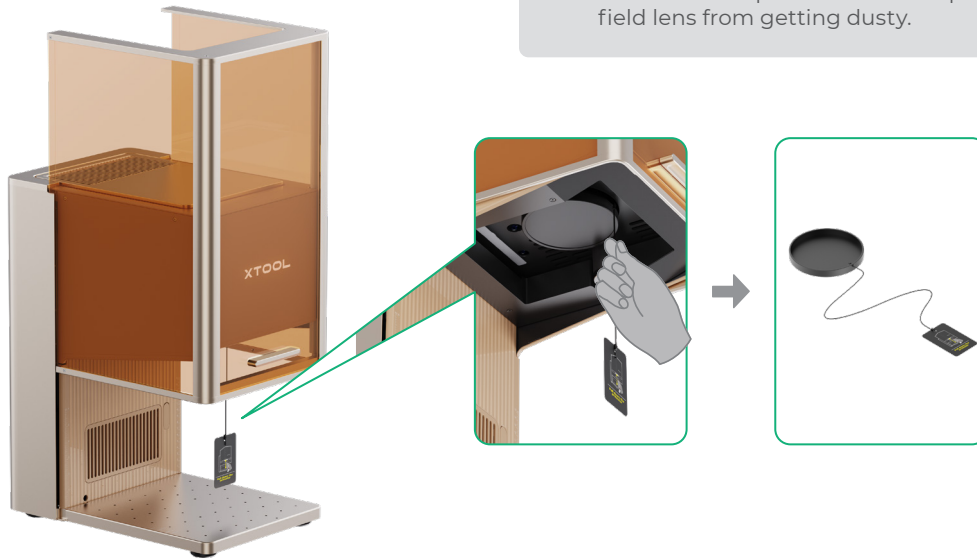
Specifications

Product name	xTool F2 Ultra UV
Model	MXF-K007-003
Surface engraving work area	200 mm × 200 mm
Voltage	110 V / 220 V
Size (W × D × H)	294 mm × 429 mm × 520 mm

Working laser	5 W UV laser
Working laser wavelength	355 ± 5 nm
Inner engraving work area	70 mm × 70 mm
Maximum processing speed	15,000 mm/s
Connection mode	Wi-Fi, USB, IP

Install xTool F2 Ultra UV

1 Detach the field lens protector.



Ensure that the protector is removed every time before you use the machine. If you won't use the machine for a long period of time, you can install the protector back to prevent the field lens from getting dusty.

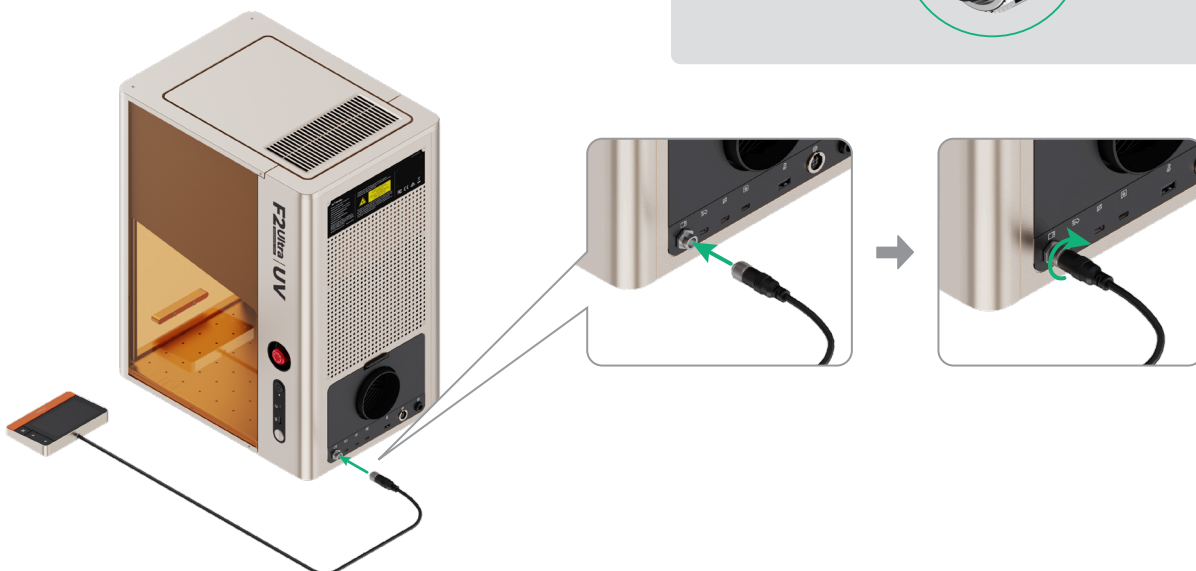
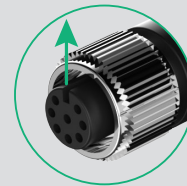
2 Connect the touchscreen controller.



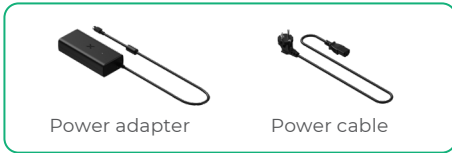
Touchscreen controller



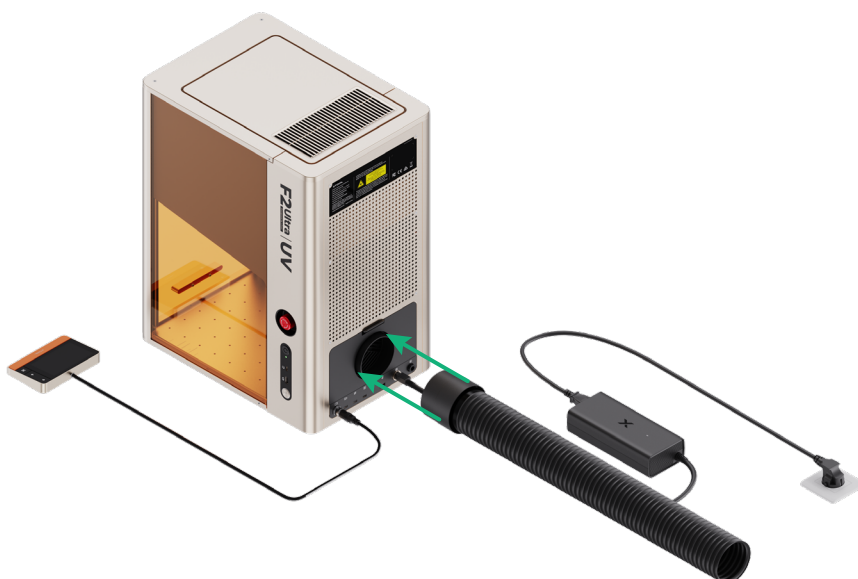
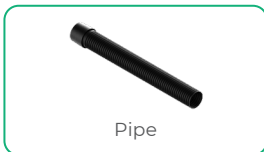
Ensure that the side with the notch faces upward.



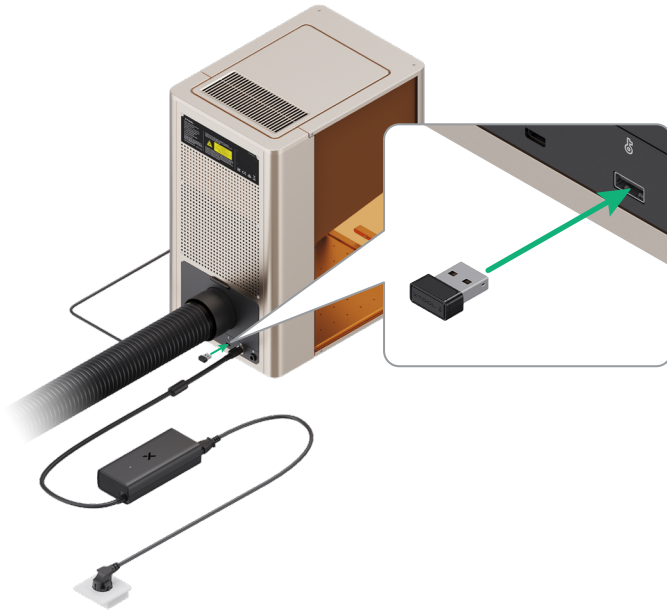
3 Connect to a power supply.



4 Install the pipe.



5 Insert the key.



You can use the key either as an access-control key or a remote interlock connector.

Access-control key

Removing the key can disable the machine's processing and related functions.

Remote interlock connector

For detailed instructions, scan the QR code or visit the link.

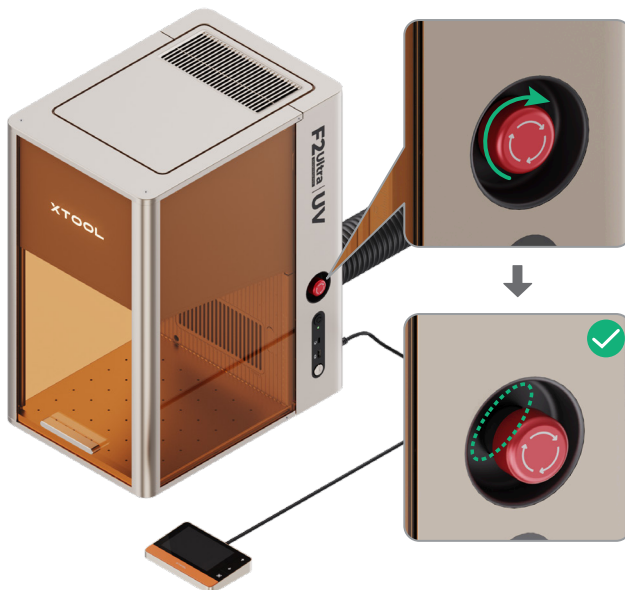


support.xtool.com/article/1367

6 Check the emergency stop button.



Ensure that the emergency stop button is released. If it is pressed, rotate to release it.



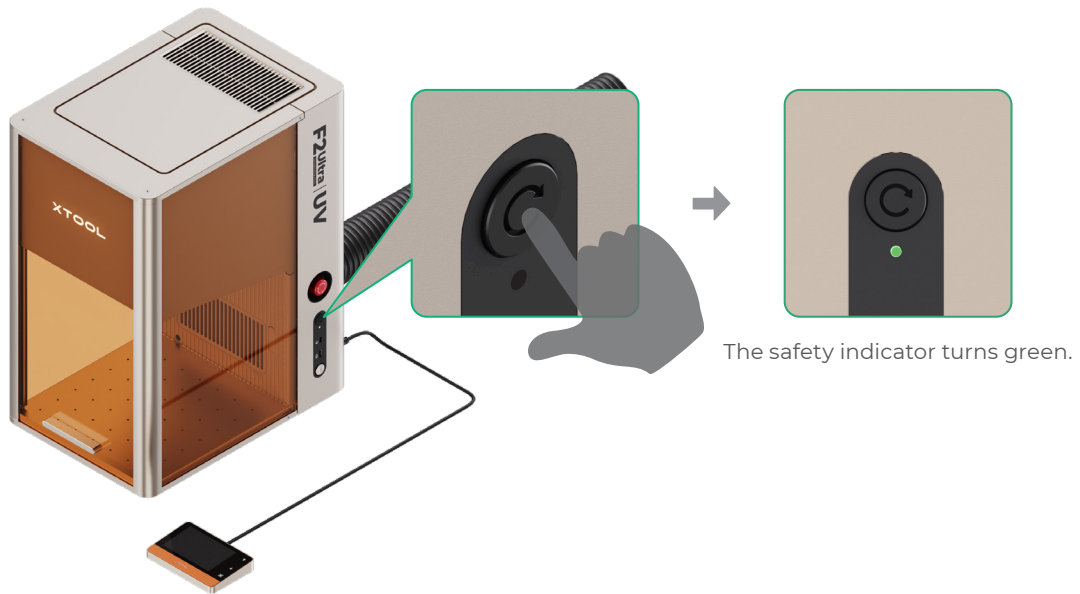
Emergency stop button

If an emergency occurs, press the emergency stop button to shut off the machine.



After dealing with the emergency, rotate the emergency stop button to release it.

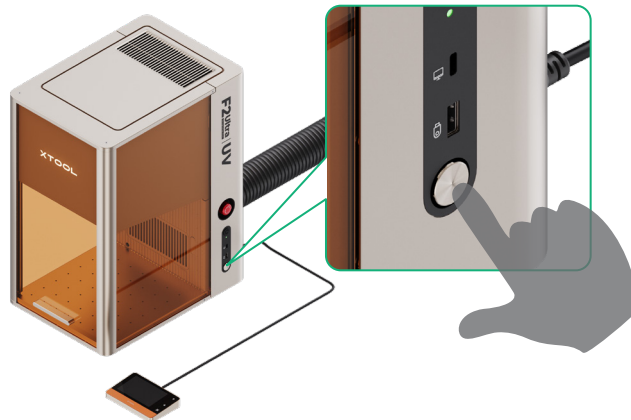
7 Press the reset button.



Use xTool F2 Ultra UV

Power on

Press the power button to turn on xTool F2 Ultra UV.



Never use the emergency stop button as a power button.

Use the emergency stop button only when an emergency occurs. Using it as a power button to turn the machine on or off may cause damage.



To extend the machine's lifespan, run it at least once every three months.

Set the language

Set the UI language on the touchscreen controller.



Operate xTool F2 Ultra UV with the software

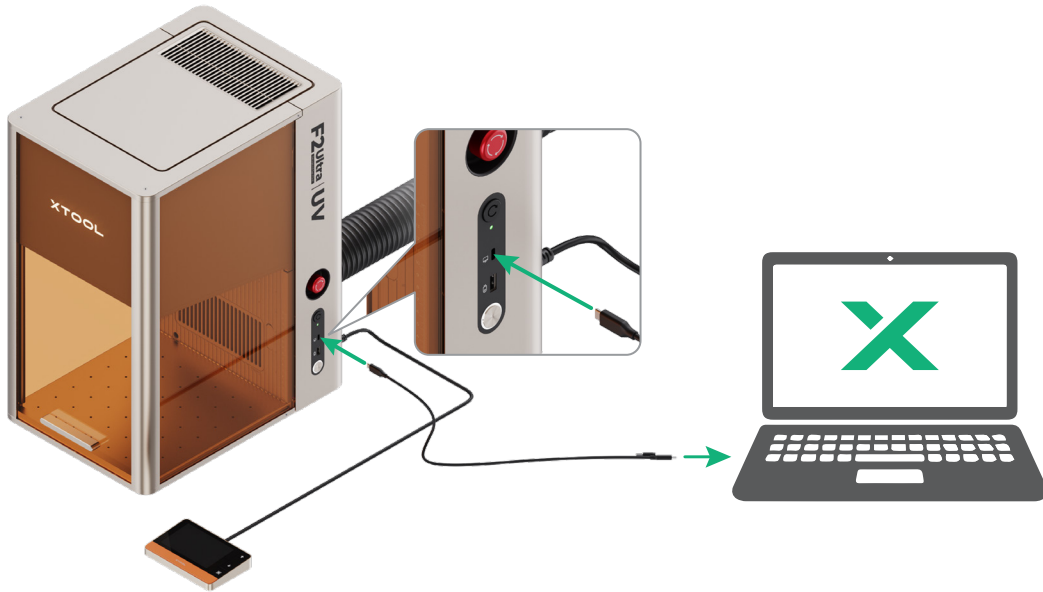
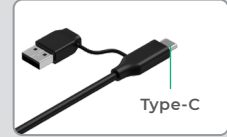
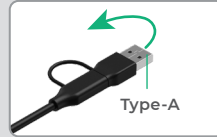
(1) Visit s.xtool.com/software to download and install the software developed by xTool.



(2) Use the USB cable to connect xTool F2 Ultra UV to your computer, and then connect xTool F2 Ultra UV in the software.



The other end of the USB cable can be connected to a USB Type-A or Type-C port. Choose between the connectors based on your needs.



For details about how to use the software to operate xTool F2 Ultra UV to process materials, scan the QR code or visit the link.

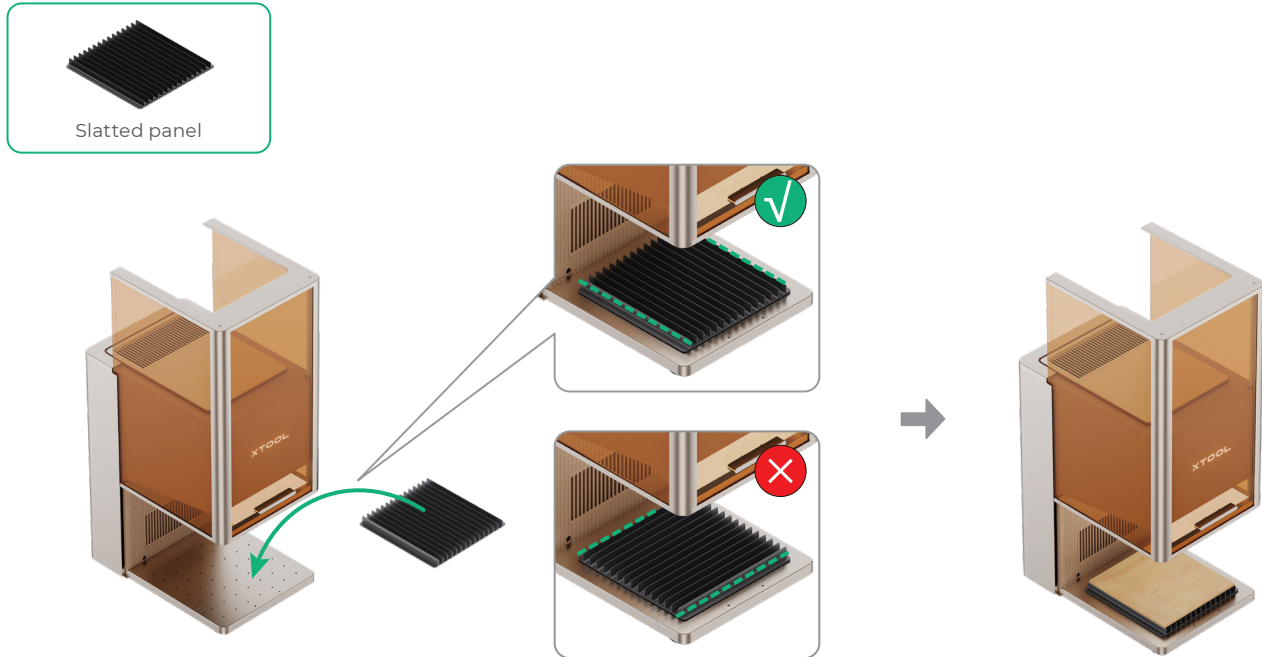


support.xtool.com/product/70

Use accessories

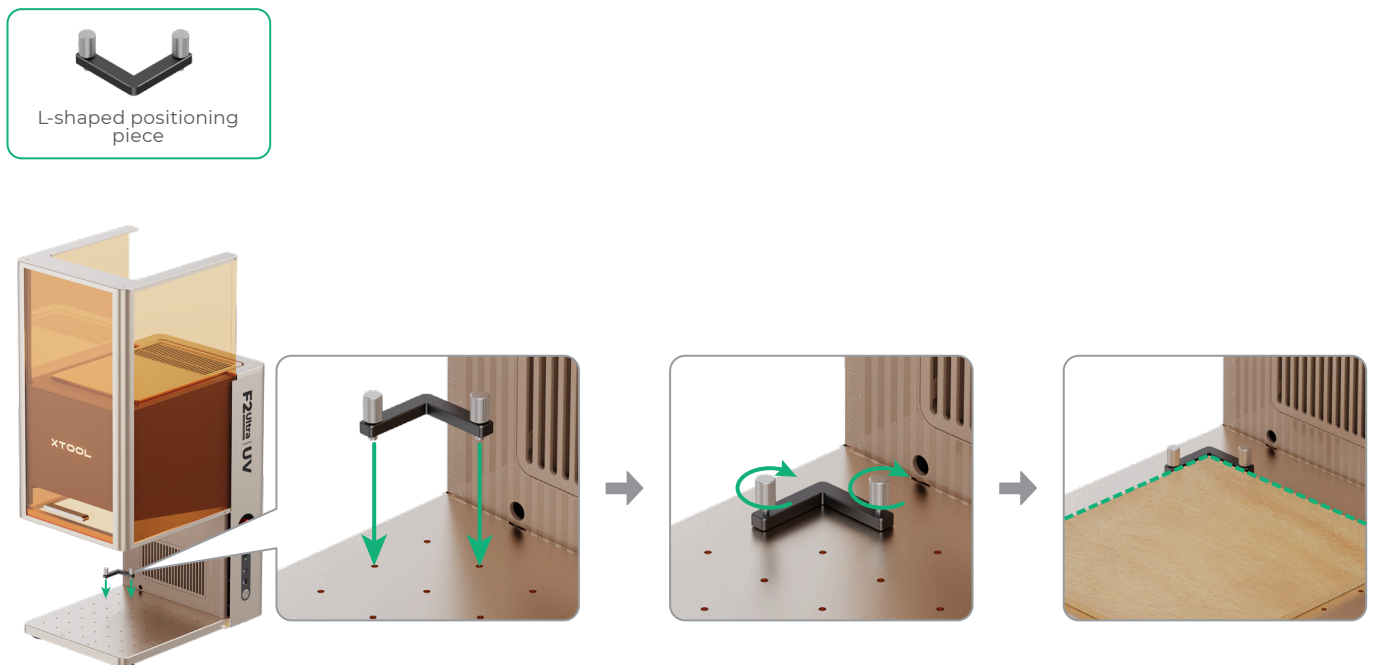
Slatted panel

To cut a material, you are advised to use the slatted panel. It helps reduce burn marks and protects the baseplate during material processing.



L-shaped positioning piece

You can use the L-shaped positioning piece for batch processing. It helps you place materials in the same position for each processing task.



Maintenance



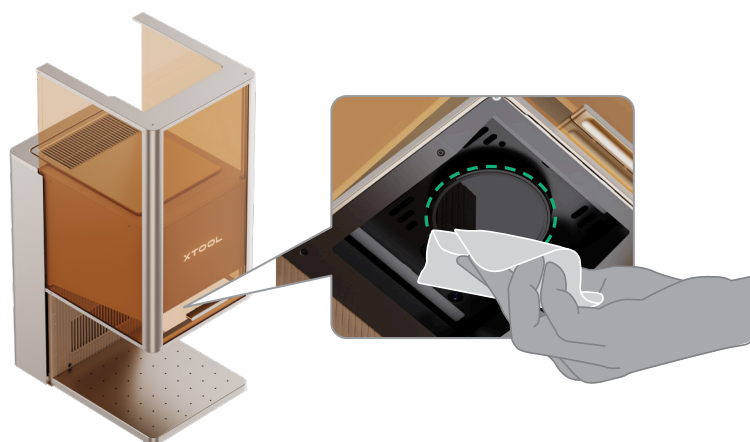
Disconnect power before maintaining the product.

Clean the field lens

When laser power attenuation occurs, for example, engraved patterns are shallow or materials can't be cut as expected, the field lens may get dirty. Clean it with the lint-free cloth moistened with alcohol.



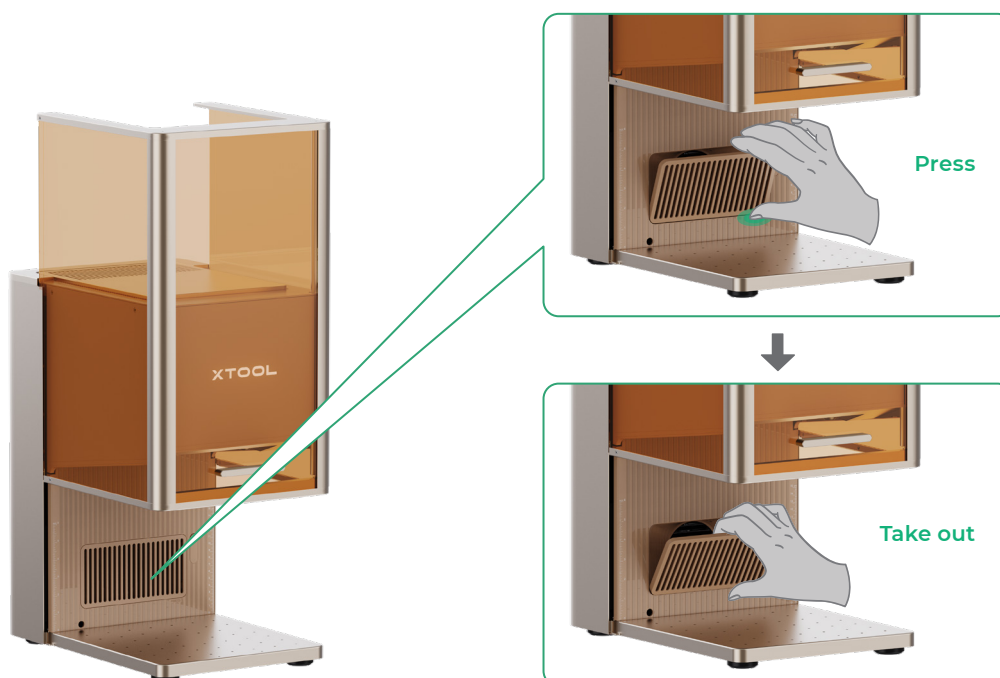
Lint-free cloth



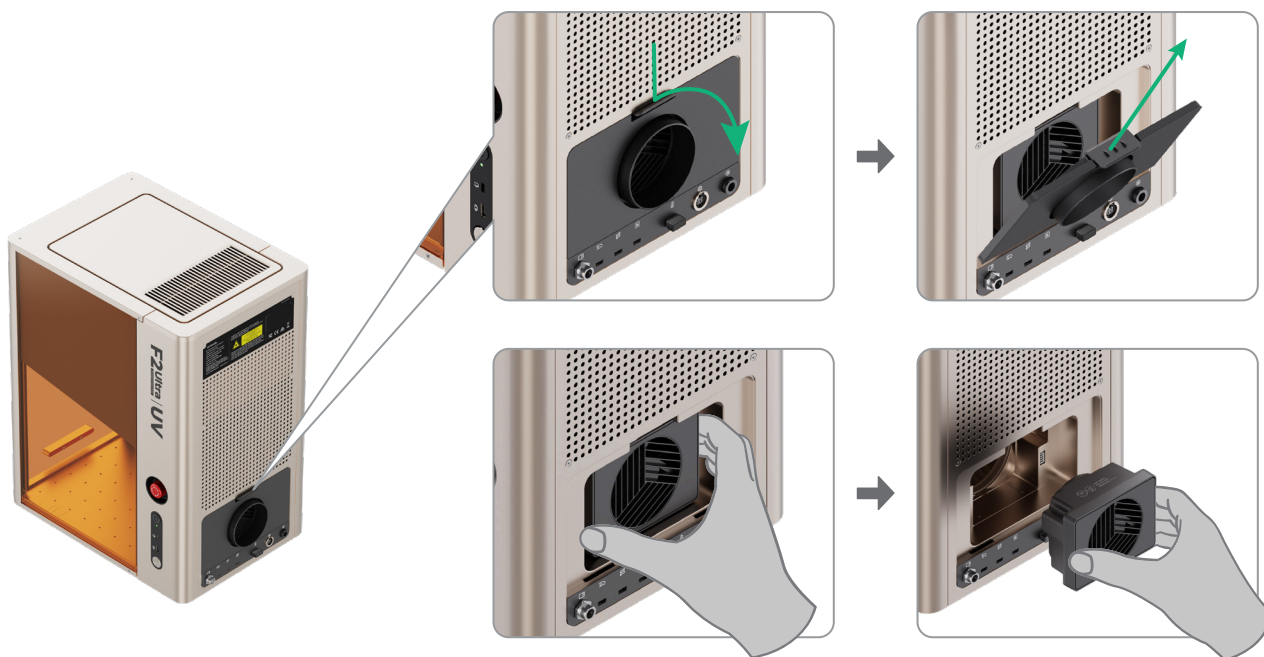
Clean the fan module

When smoke runs out of the protective enclosure, the fan module may be blocked by dust. Clean it to ensure proper smoke exhausting.

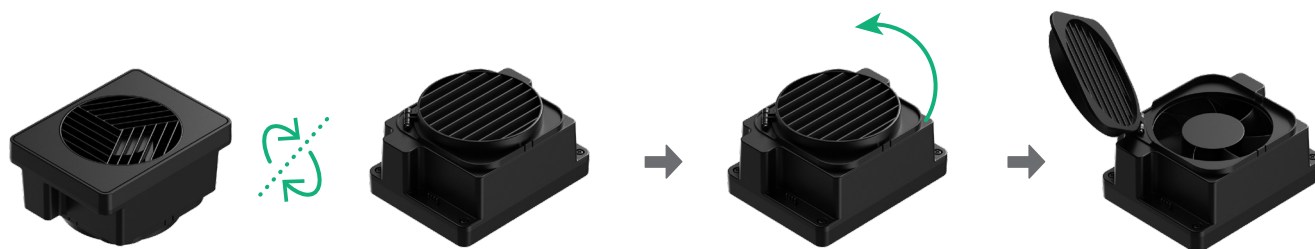
(1) Remove the magnetic fan guard from the smoke outlet.



(2) Open the cover, and then take out the fan module.



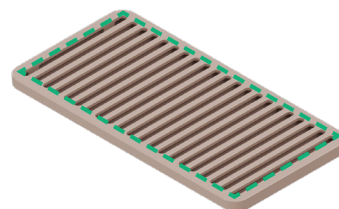
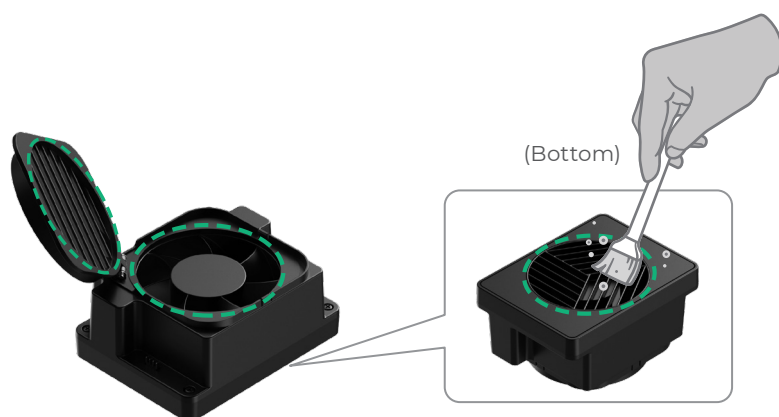
(3) Open the cover to access the fan.



(4) Use a brush or other tools to clean the fan module and the magnetic fan guard. Then, install them back to the main unit.



Brush (not provided)



(Magnetic fan guard)



Do not rinse or immerse the fan module in water, as it may damage the circuit.

XTOOL