

XTOOL | Retail Marker

Quick Start Guide



Contents

What is in the box	01
Meet xTool Retail Marker	02
Get the machine ready	05
Use xTool Retail Marker	07
Maintenance	08

* The English version is the original instructions verified by the manufacturer.

What is in the box



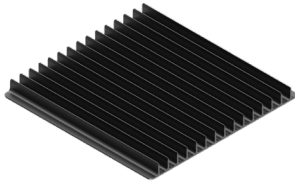
xTool Retail Marker



Power cable



Pipe



Slatted panel



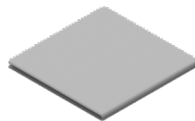
L-shaped positioning piece



USB cable



Screwdriver



Lint-free cloth



Key (pre-installed)



Test materials



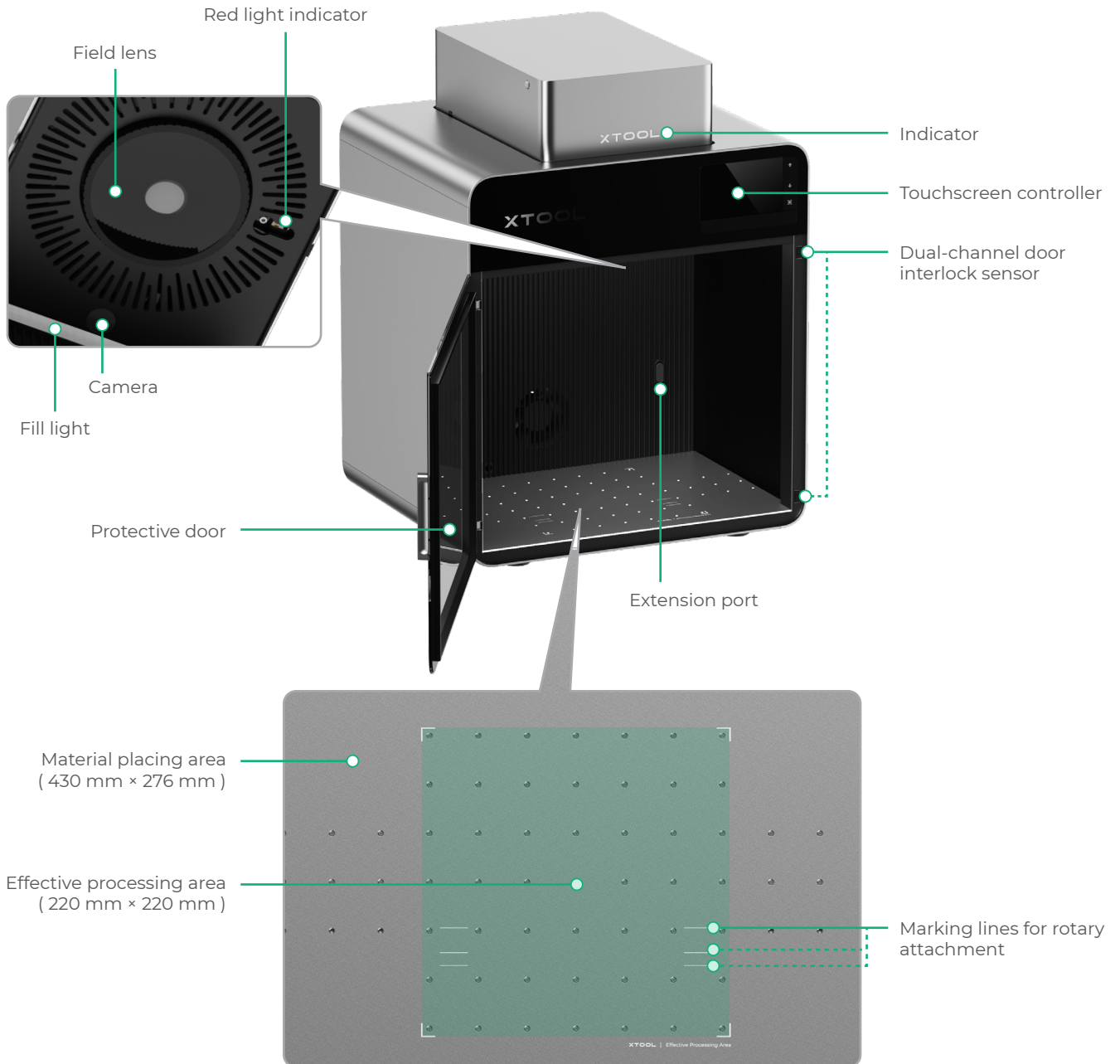
Quick Start Guide

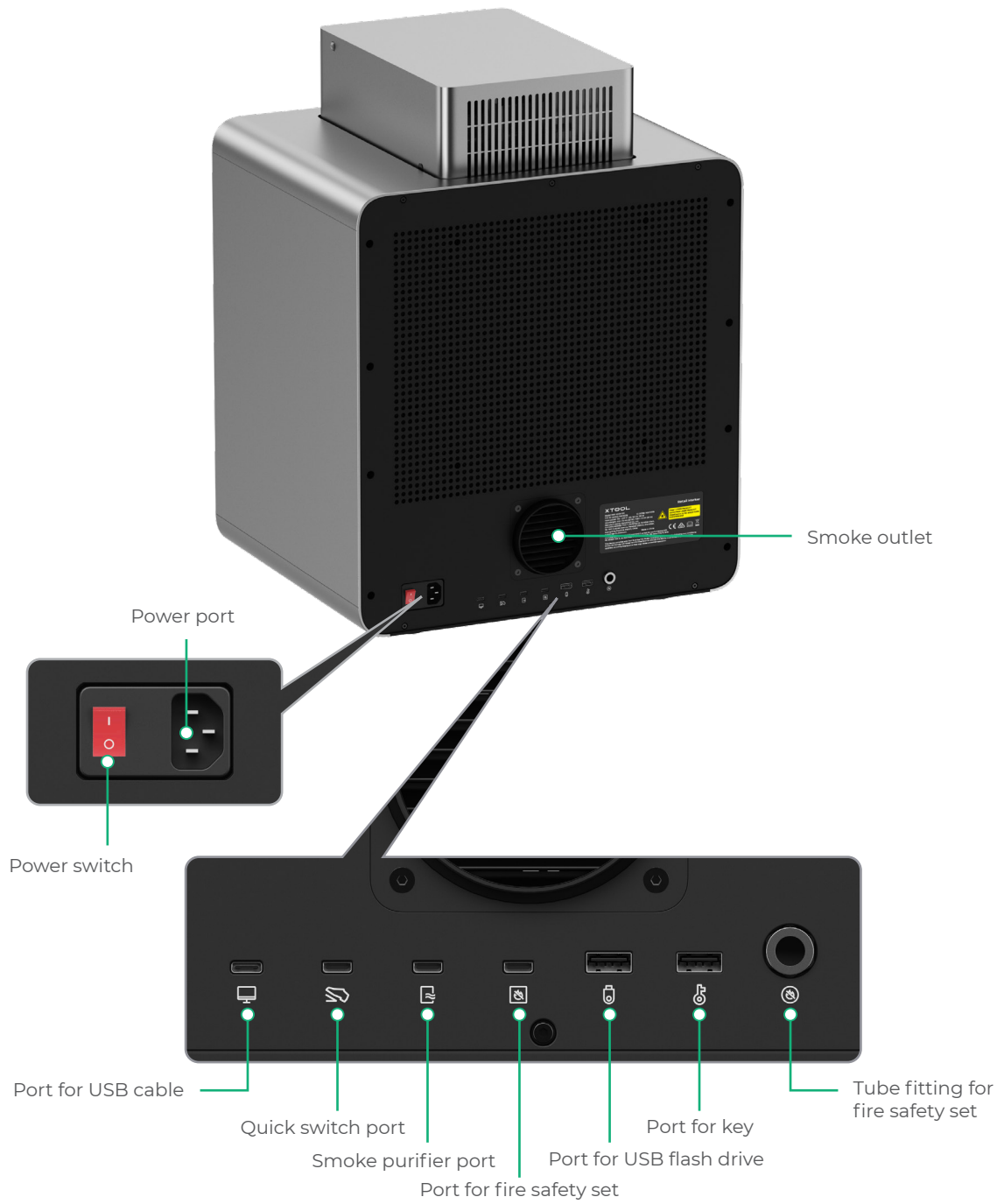


Safety Instructions

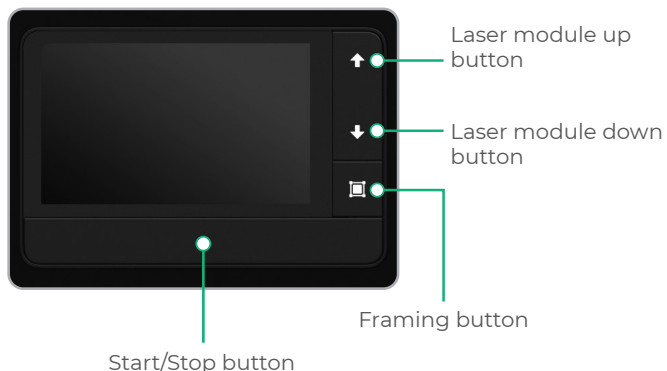
Meet xTool Retail Marker

Product structure



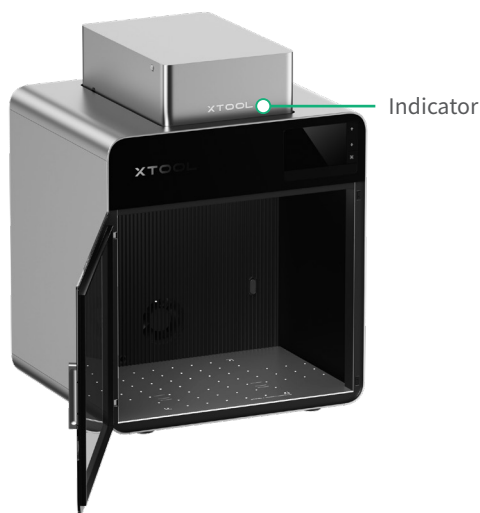


Touchscreen controller



- **Laser module up button:** Lifts the laser module during manual focusing.
- **Laser module down button:** Lowers the laser module during manual focusing.
- **Framing button:** Press it once to start or stop framing.
- **Start/Stop button:** Press it once to start or stop material processing; press it twice consecutively to repeat the last processing task.

Machine states and indicator display



Machine state	Indicator display
Powered on	Solid on
Processing	Blinking slowly
Setting network / Upgrading firmware	Blinking rapidly
Sleeping / Powered off	Going off

Specifications

Model	MXF-K006-001
Product name	xTool Retail Marker
Size (W × D × H)	461 mm × 418 mm × 503 mm
Effective processing area	220 mm × 220 mm
Maximum processing speed	10,000 mm/s

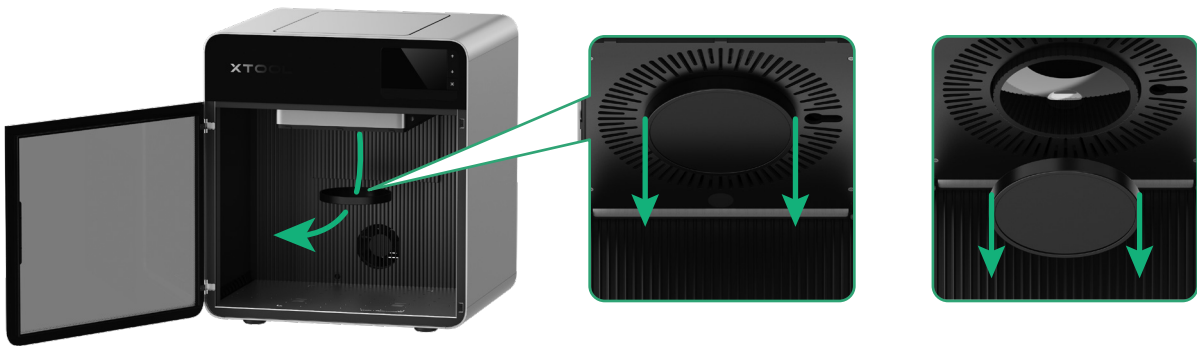
Input power	100 – 240 V ~ 50 / 60 Hz, 130 W
Laser module	445 ± 15 nm blue-light laser 1064 ± 5 nm fiber infrared laser
Laser power	20 W (445 ± 15 nm) 20 W (1064 ± 5 nm)
Connection mode	Wi-Fi, USB, IP
/	/

Get the machine ready

- 1 Ensure that xTool Retail Marker is turned off.



- 2 Pull down the field lens protector to remove it.



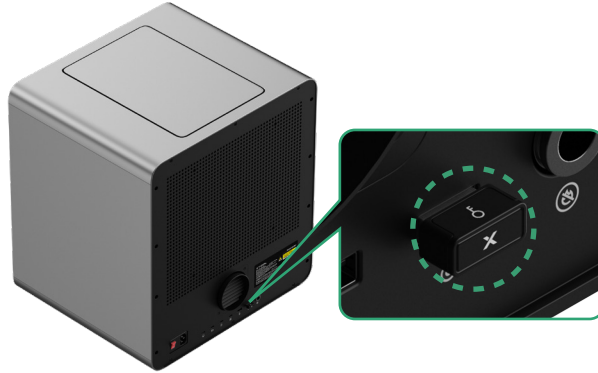
Ensure that the protector is removed every time before you use the machine. If you won't use the machine for a long period of time, you can install the protector back to prevent the field lens from getting dusty.

3 Ensure the key is fully inserted.

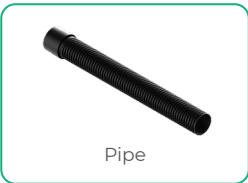


Access-control key

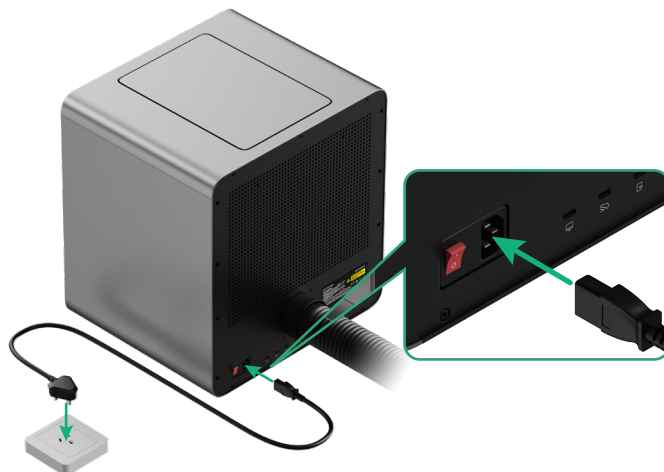
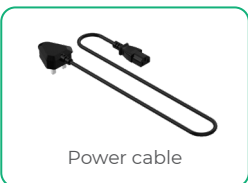
Removing the key can disable the machine's processing and related functions.



4 Install the pipe.



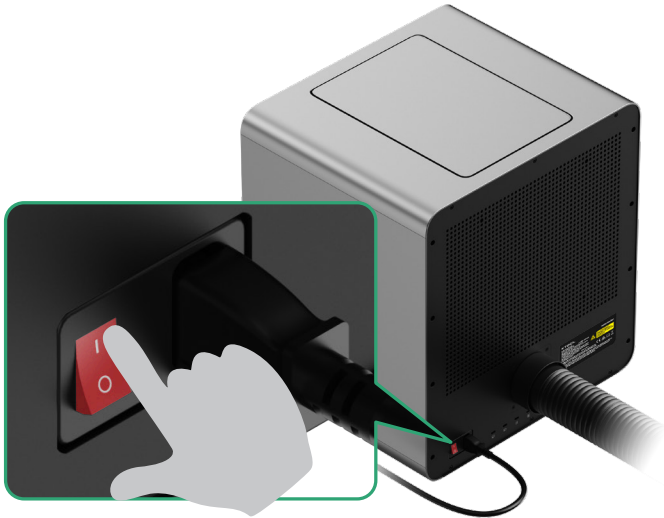
5 Connect to a power supply.



Use xTool Retail Marker

1 Power on

Turn on the power switch to power on xTool Retail Marker.



2 Operate xTool Retail Marker with Customthings



Customthings is a customized software. Scan either QR code below to contact our sales for inquiries or customization services.



customthings.com



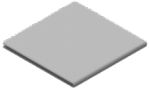
xtool.com/pages/xtool-retail-solution

Maintenance

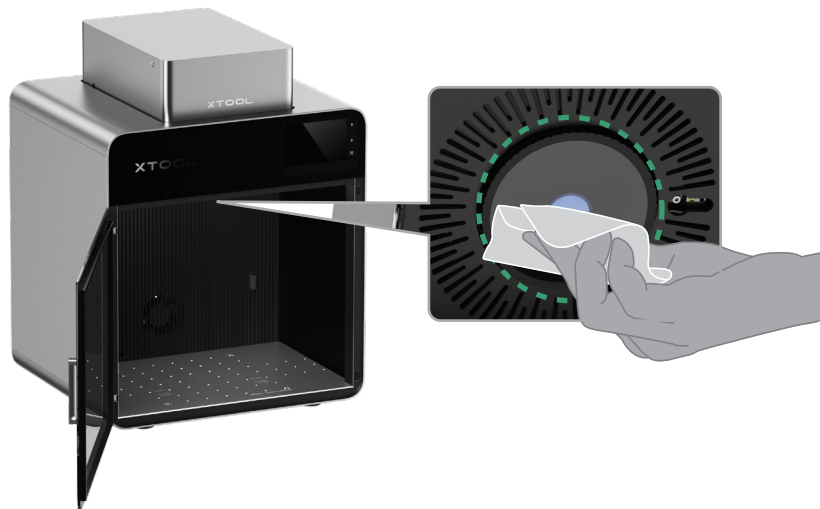
 Disconnect power before maintaining the product.

Clean the field lens

When laser power attenuation occurs, for example, engraved patterns are shallow or materials can't be cut as expected, the field lens may get dirty. Clean it with the lint-free cloth moistened with alcohol.



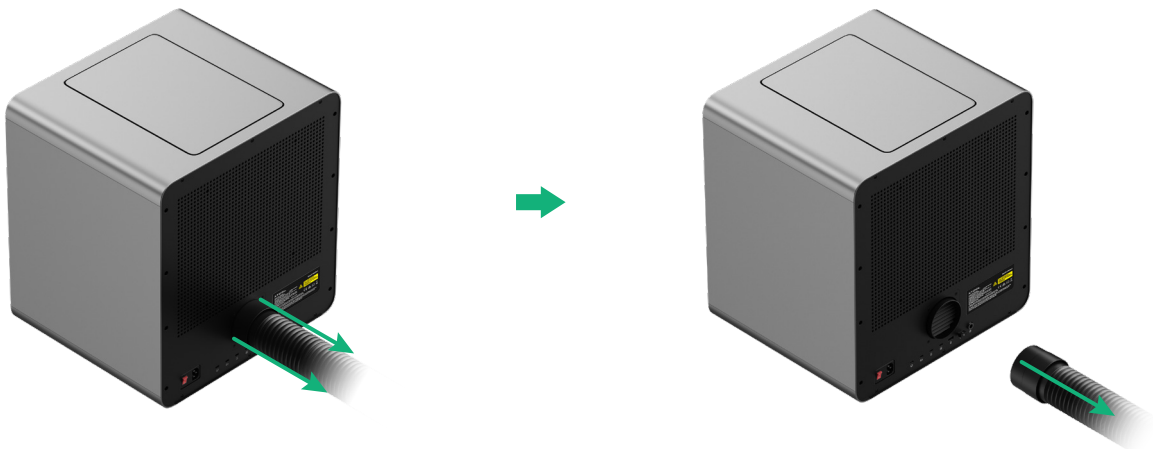
Lint-free cloth



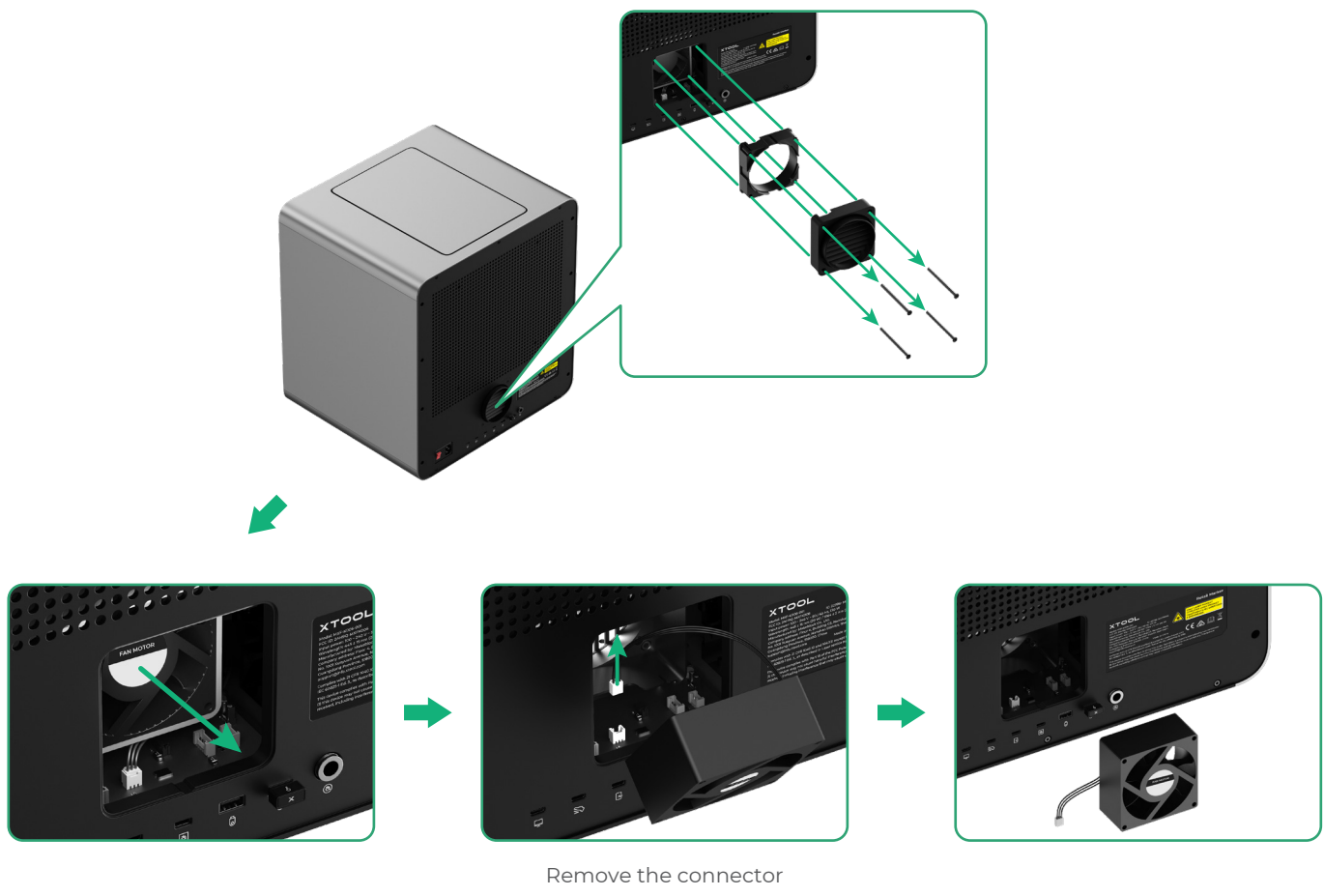
Clean the fan module

When smoke runs out of the protective door, the fan module may be blocked by dust. Clean it to ensure proper smoke exhausting.

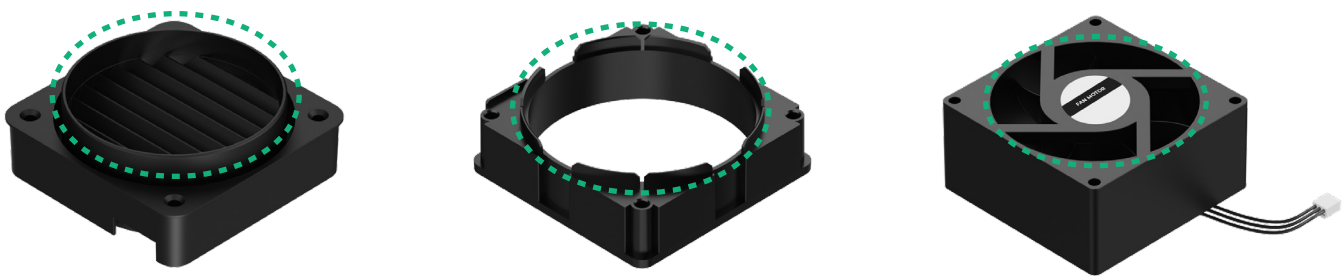
(1) Remove the pipe.



(2) Detach the cover, and then take out the fan module.



(3) Use a brush or other tools to clean both sides of the fan module.



⚠ Do not rinse or immerse the fan module in water, as it may damage the circuit.

(4) Install the fan module back to the main unit.



Plug in the connector

