

XTOOL selected

xTool Air Compressor



Quick Start Guide

List of items - - - - - **01**

Meet Air Compressor - - - - - **01**

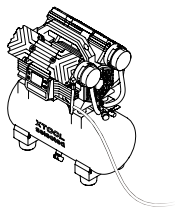
Connections - - - - - **02**

Use the devices - - - - - **04**

Maintenance - - - - - **07**

FAQ - - - - - **10**

List of items



Air compressor



Filters for the silencers (spare)



Tube



Quick Start Guide

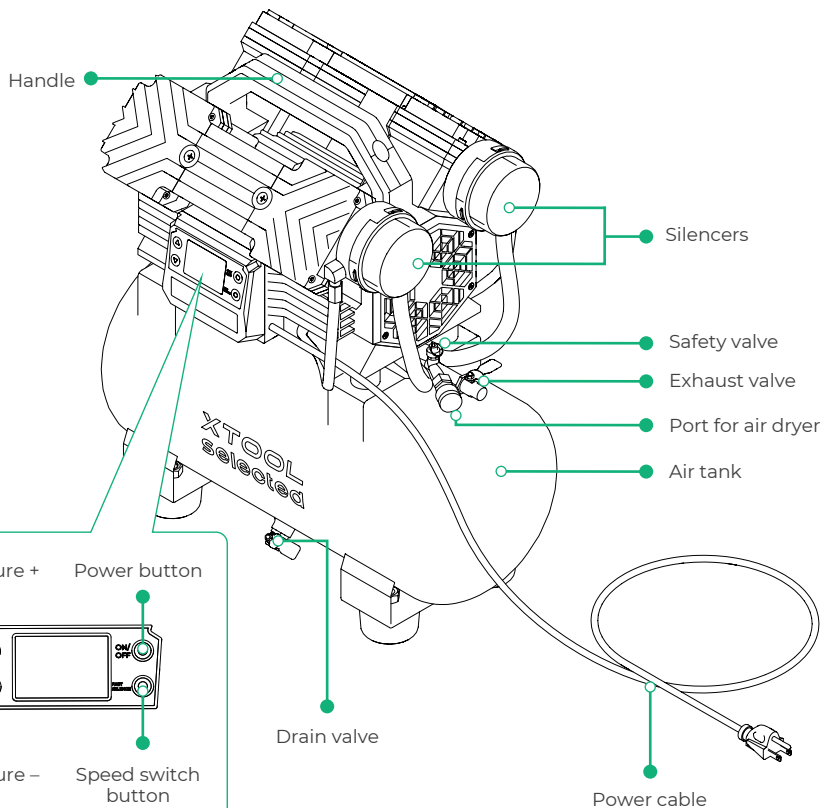


Safety Instructions



The power cable varies according to the region in which the product is delivered.

Meet Air Compressor



Operation panel

Product specifications

PSI	CFM	Operating pressure (MPa)	Rated power (W)
145	12.4	0.3-1.0	2200

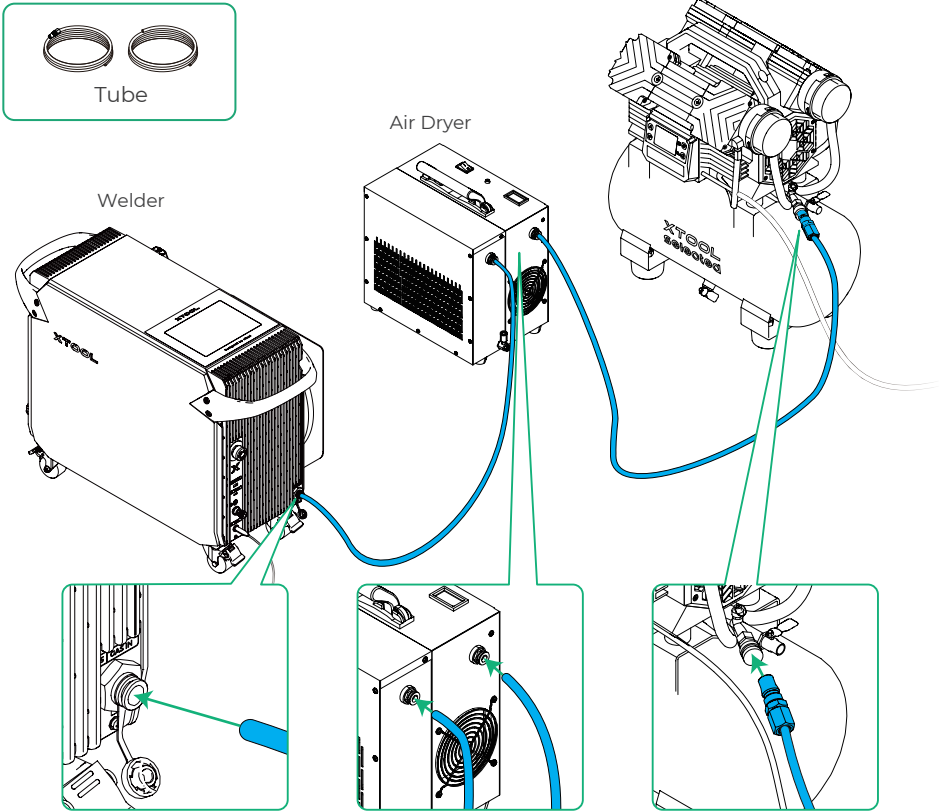
Tank capacity (L)	Operating voltage (VAC)	Machine net weight (kg)	Dimensions (W × H × D) (mm)
20	200–240	16	460 × 530 × 270

Connections

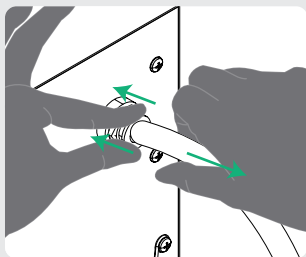


Since the air compressor is designed to be used with the air dryer and the welder, this manual includes instructions for operating the air dryer. Please find the air dryer components from its package.

1 Connect the devices

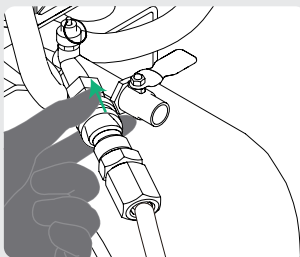


Removing tubes



Air Dryer

- Press the connector collet and pull out the tube.



Air compressor

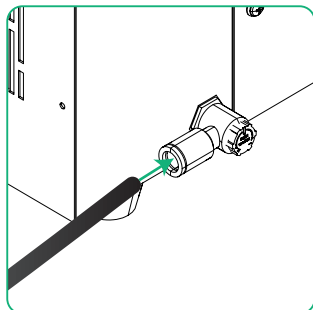
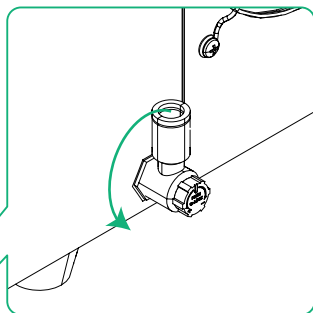
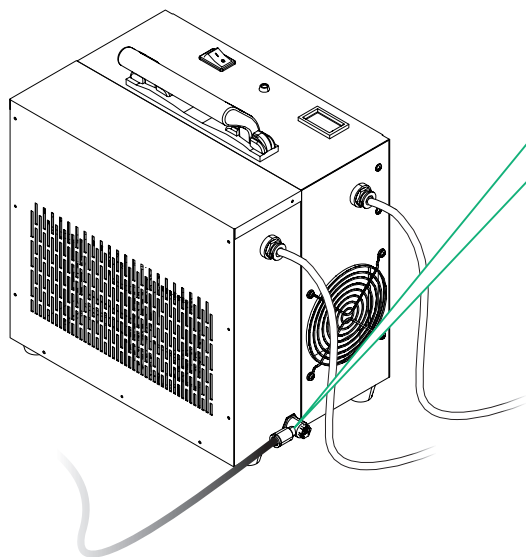
- Press the connector collet and the tube will pop out automatically.

2 Connect drain tube



Drain tube (2 m)

- Connect the drain tube to the drain outlet and guide the tube to a wastewater disposal area.



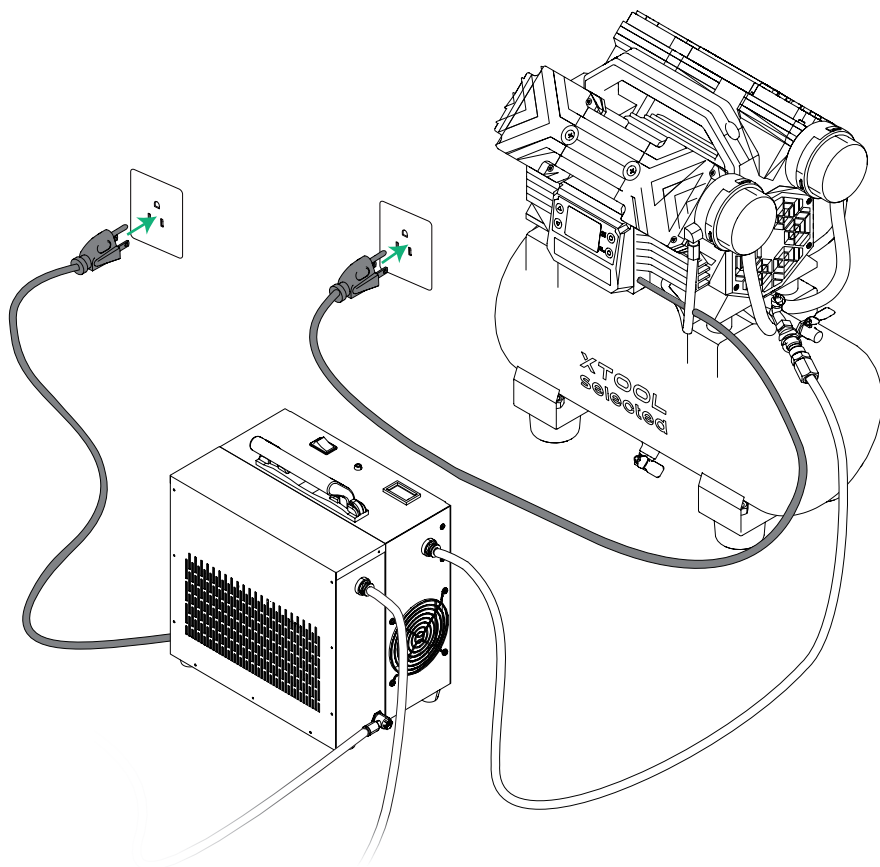
3 Connect to power supply



Power voltage requirements:

- Air dryer: US/Japan: 100–120 VAC
EU/UK/AU: 200–240 VAC
- Air compressor: 200–240 VAC

For other countries and regions, see the requirements on the machine label.

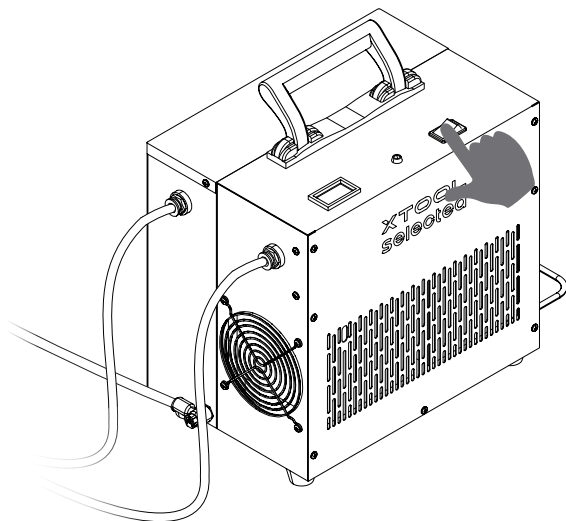


Use the devices

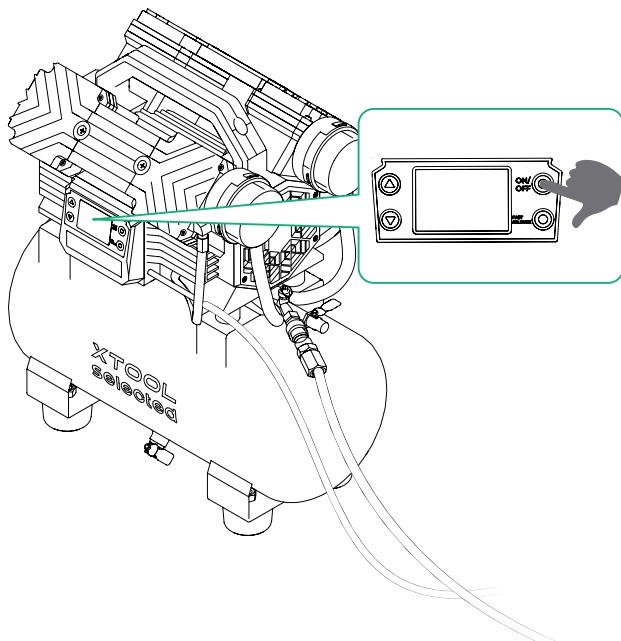
1 Power on

- Power on the air dryer first and then air compressor.

1



2

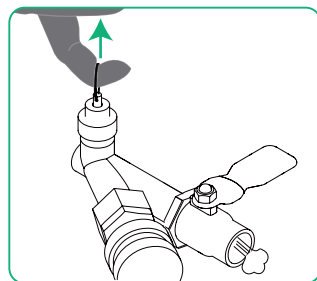
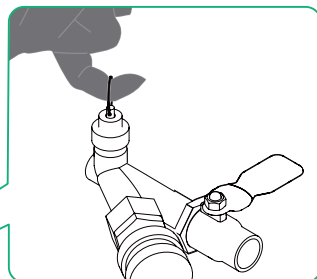
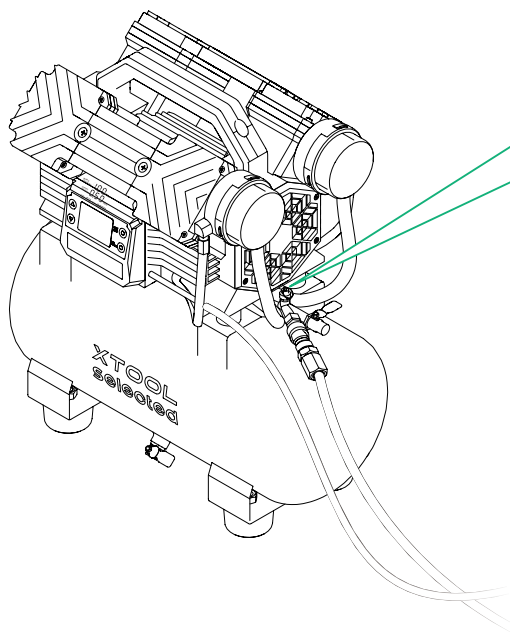


CAUTION

The air compressor's upper part heats up during operation. Do not touch it during operation or shortly after it shuts down.

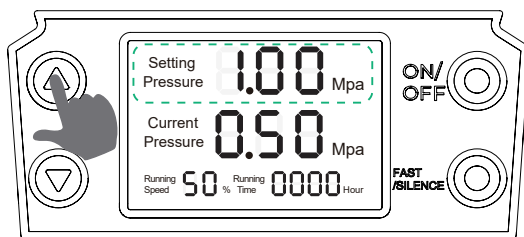


2 Check the safety valve of the air compressor



■ Pull the safety valve ring to check for gas release. If there is gas coming out, the air compressor is working properly.

3 Set pressure



Pressure range: 0.3–1.0 MPa

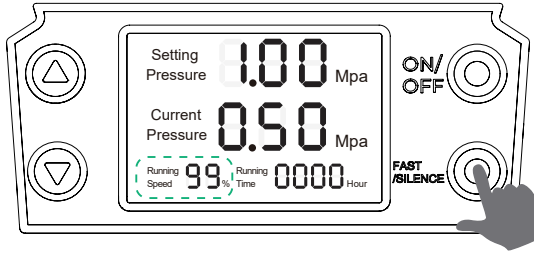
Recommended pressure: 1.0 MPa

Up button: + 0.05 MPa per press

Down button: –0.05 MPa per press

The air compressor automatically stops working when the air pressure reaches the set value, and starts working again when the pressure drops 0.2 MPa below the set value.

4 Switch the speed mode



Press the FAST/SILENCE button to switch the operating speed. A speed of 99% indicates high-speed mode, while 50% indicates low-speed mode.

Recommended mode: FAST

■ Once the air compressor's current pressure is steady, you can proceed to operate the welding machine.



To stop the air dryer and compressor, first turn off the air compressor and then turn off the air dryer.

Maintenance

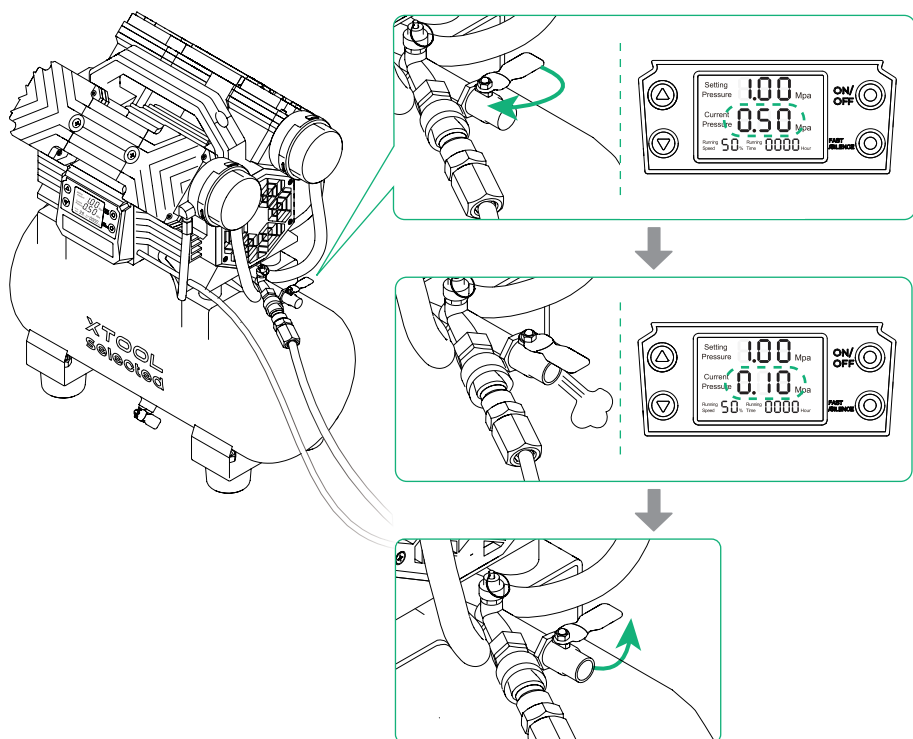


- Before performing any maintenance, disconnect the power supply and release all air to avoid potential hazards.
- Wait until the machine has completely cooled down before maintenance to prevent burns.

Part	Maintenance activity	Frequency
Air tank	Discharge of waste water	Once per day
Filters of the silencers	Clean or replace	After use of 100 hours
Safety valve	Check gas release	Every week

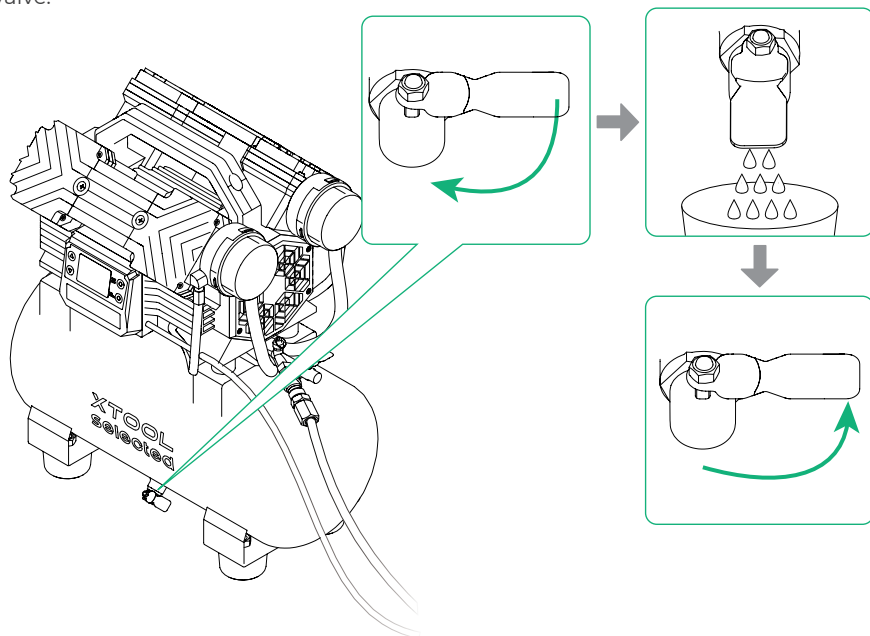
Discharge of waste water

(1) Check the pressure level. If it exceeds 0.1 MPa, open the exhaust valve to release air until the pressure drops below 0.1 MPa or lower.

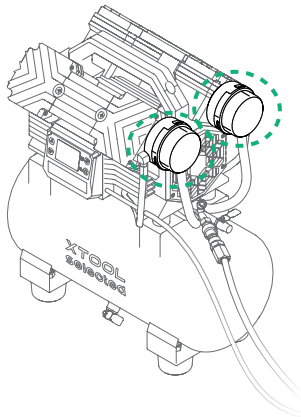
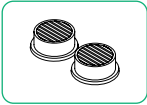


(2) Power off the air compressor and disconnect the power supply.

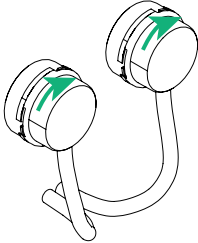
(3) Open the drain valve to release water. Once draining is complete, close the drain valve.



Clean or replace the silencer filters

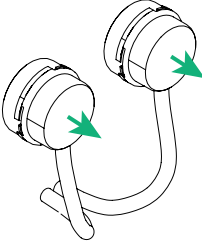


1



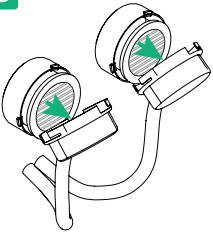
Gently rotate the silencer covers clockwise until the latches unlock.

2



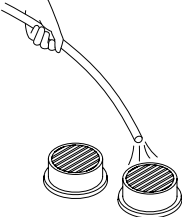
Remove the silencer covers.

3



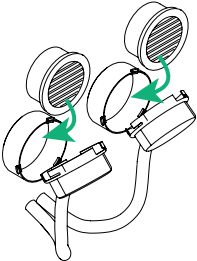
Take the filters out. To clean the filters, proceed to step 4. To replace the filters, skip to step 5.

4



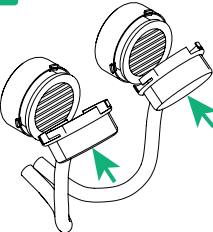
Blow the filters using the compressed and dry air processed by the air compressor and air dryer. Do not wash it with water.

5



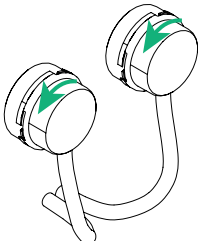
Reinstall the cleaned filters or install a pair of new filters.

6



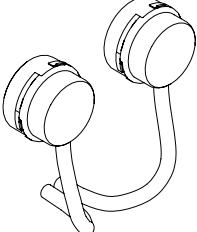
Reattach the silencer covers.

7



Rotate counterclockwise to lock the latches in place.

8



Complete

1 What should I do if the air volume and pressure are insufficient?

- Inspect all tube and pipe connections. If you find any leaks, apply tape to the threaded ends to ensure a secure connection.
- If xTool MetalFab CNC Cutter is connected and the xTool software displays an air pressure lower than 0.4 MPa, first verify the air compressor is set to 1 MPa in Fast mode as recommended.

If the settings are correct but pressure remains low, inspect all tube connections for leaks and check the compressor for damage.

2 Is it possible to shorten the tube connecting to the welder?

It is not recommended. A shorter tube may not effectively condense water, which could disrupt airflow to the welder.

3 What should I do if water enters the tube connecting the welder?

If the processing result is poor and water droplets are found on the lens protector, follow these steps to resolve the issue:

- (1) Stop using the welder's cutting function immediately.
- (2) Check the air dryer to ensure it is functioning properly.
- (3) Allow the air dryer to run and continue drying the air.
- (4) After some time, place a dry piece of cardboard near the welder head nozzle. If the cardboard remains dry, the air dryer is now supplying dry air.
- (5) Replace the lens protector and resume processing.

XTOOL
selected