

XTOOL | F1 Ultra

Quick Start Guide



List of items	01
Meet your xTool F1 Ultra	02
Get the machine ready	05
Install accessories	09
Use your xTool F1 Ultra	10
Maintenance	11

* The English version is the original instructions verified by the manufacturer.

List of items



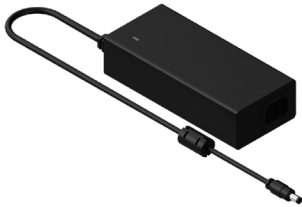
xTool F1 Ultra



Touchscreen controller



Pipe



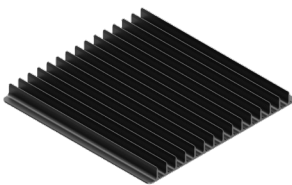
Power adapter



Power cable



USB cable



Slatted panel



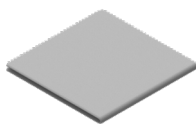
Screwdriver



L-shaped positioning piece



Key



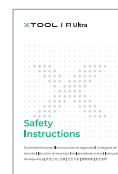
Lint-free cloth



Example project material



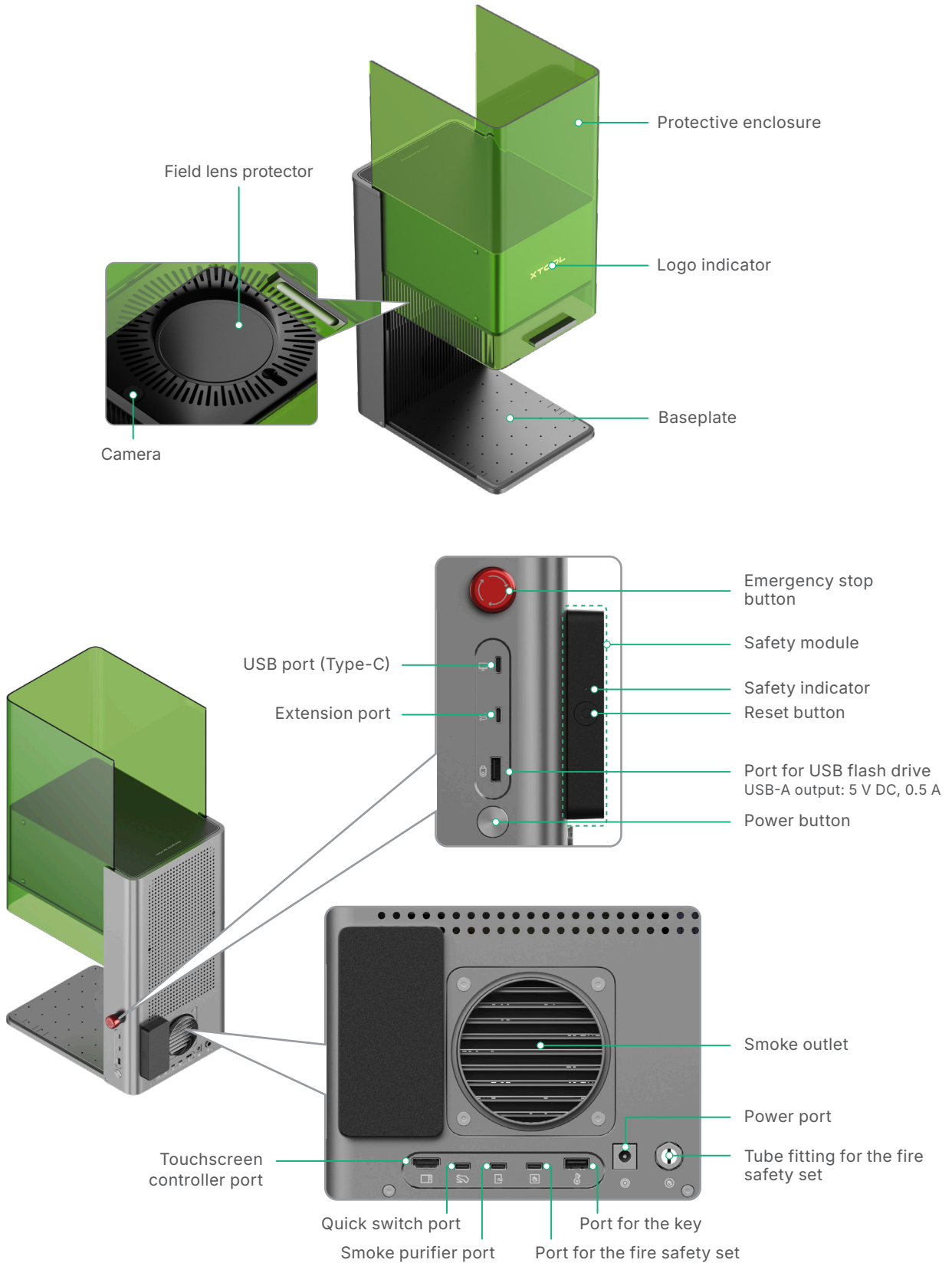
Quick Start Guide



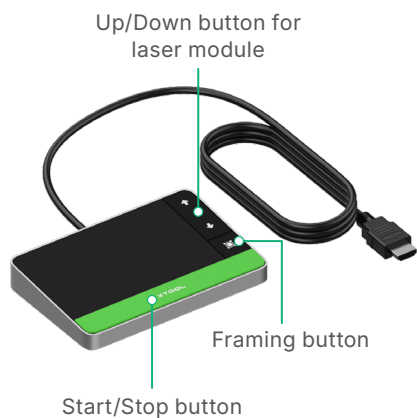
Safety Instructions

Meet your xTool F1 Ultra

Product structure



Touchscreen controller



- **Up/Down button for laser module:** Lifts or lowers the laser module during manual focusing.
- **Framing button:** Starts or stops framing.
- **Start/Stop button:** Starts or stops material processing.

Nameplate



XTOOL | F1 Ultra

Model: MXF-K002-B21

Wavelength: 445 ± 15 nm (20 W) / 1064 ± 5 nm (20 W)

Input power: 24 V – 25 V = 8 A

Manufactured by: Makeblock Co., Ltd.

Company address: Floor 4, Building C3, Nanshan iPark, No. 1001 Xueyuan Avenue, Nanshan District, Shenzhen, Guangdong Province, 518000, China

EU Contact: Makeblock Europe B.V.

Address: Westplein 12, 3016 BM, Rotterdam, the Netherlands

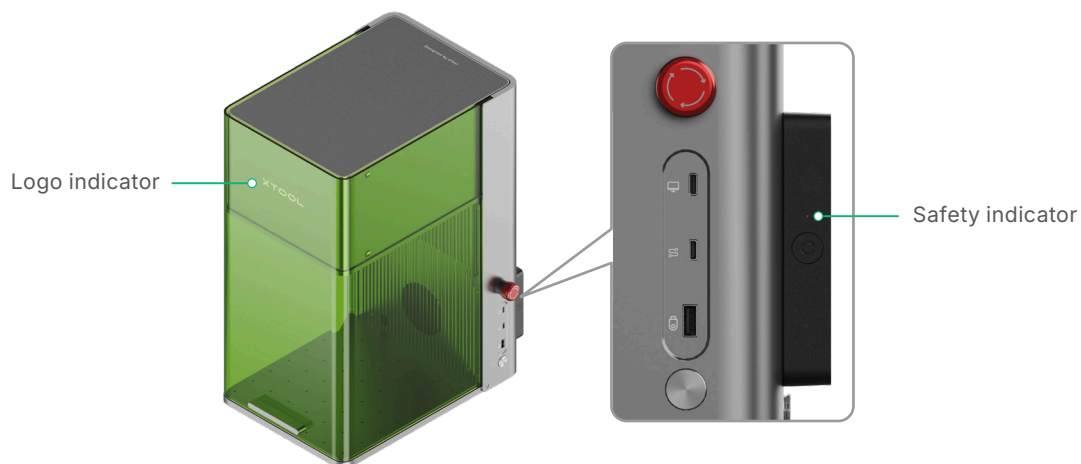
E-mail address: support@info.xtool.com

Mass: 13.6 kg





Made in China






Indicator description











Logo indicator:

Indicator display	Machine state
 Solid on	Powered on
 Blinking slowly	Processing
 Blinking rapidly	Setting network / Upgrading firmware
 Going off	Sleeping / Powered off

Safety indicator:

Indicator display	Machine state
 Solid red	Emergency stop button pressed
 Solid white	Emergency stop button released, and device reset required
 Solid green	Emergency stop button released, and device ready for operation

Buzzer

Buzzer	Machine state
Buzzing once	Working or connection status changed, which includes: <ul style="list-style-type: none">  Connected to or disconnected from xTool software  Switched between STA and AP modes  Network configuration in AP mode succeeded (connected to a Wi-Fi network)  Connected to or disconnected from the fire safety set  Access-control key inserted or removed  Ready for processing  Processing ended  Processing paused due to machine movement
Keeping buzzing	Flames detected

Note: You can turn off the buzzer reminders through xTool software. If this function is turned off, the buzzer will not sound when the device state changes or an exception occurs.

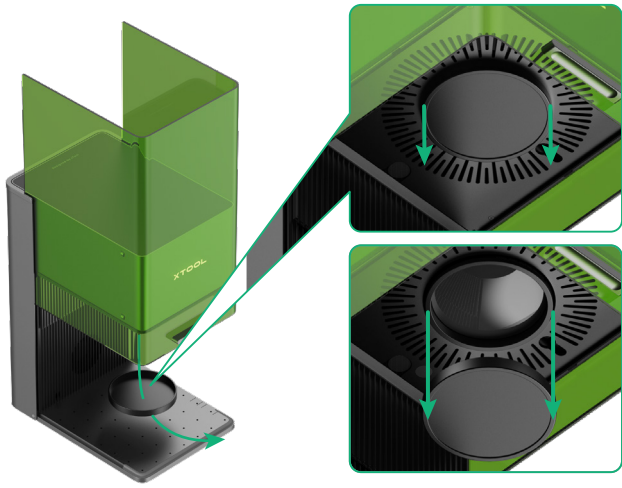
Specifications

Product name	xTool F1 Ultra
Size	493 mm × 253 mm × 373 mm
Internal working area	220 mm × 220 mm
Maximum processing speed	10,000 mm/s

Input power	24 V – 25 V = 8 A
Laser module	445 ± 15 nm blue-light laser 1064 ± 5 nm fiber infrared laser
Laser power	20 W (445 ± 15 nm) 20 W (1064 ± 5 nm)
Connection mode	Wi-Fi, USB, IP

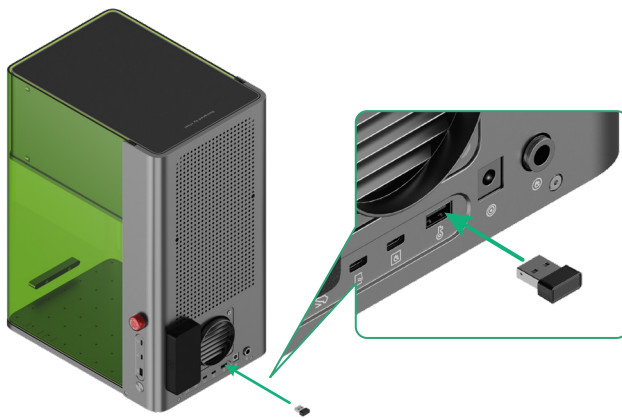
Get the machine ready

- 1 Pull down the field lens protector to remove it.



If you won't use the machine for a long period of time, you can install the protector back to prevent the field lens from getting dusty. Ensure that the protector is removed every time before you use the machine.

- 2 Insert the key.



Access-control key

You can remove the key to disable the processing and related functions of the machine.

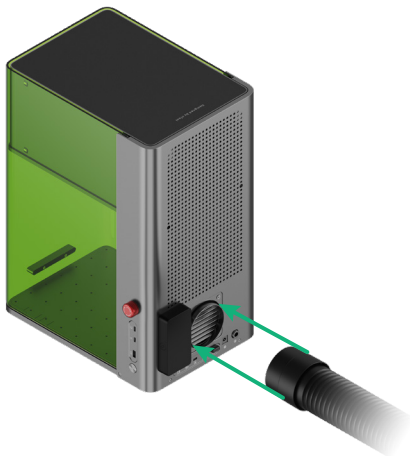
Interlock connector

You can also use the key as an interlock connector. Go to support.xtool.com/article/1367 to learn more.

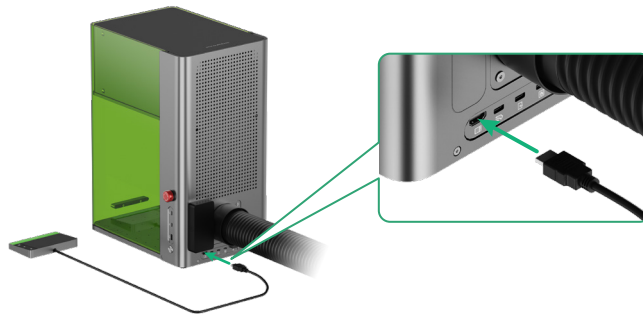


support.xtool.com/article/1367

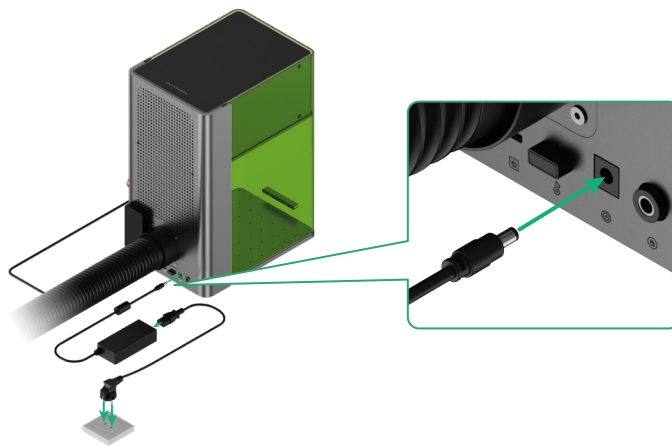
- 3 Install the pipe.



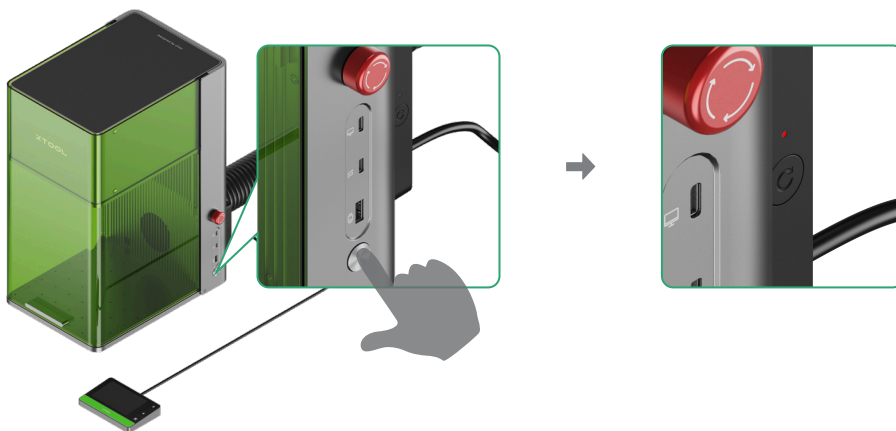
4 Connect the touchscreen controller.



5 Connect to a power supply.



6 Press the power button to turn on xTool F1 Ultra. The safety indicator will light up red.

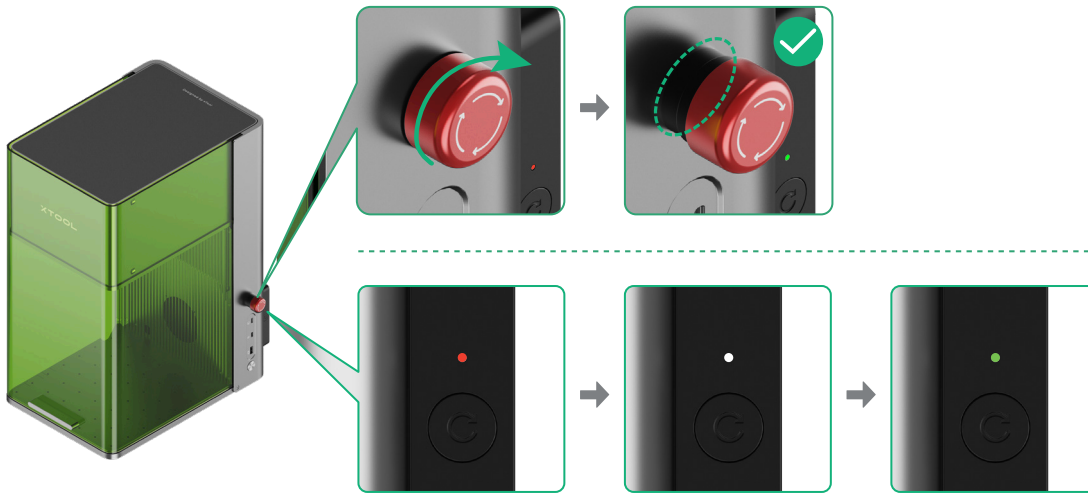


Do not use the emergency stop button as a Power button.

Use the emergency stop button only when an emergency occurs. Using it as a Power button to turn on and off the machine may damage the machine.

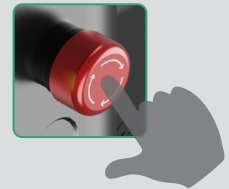


7 Rotate the emergency stop button clockwise to release it. The safety indicator will first turn white and then green.

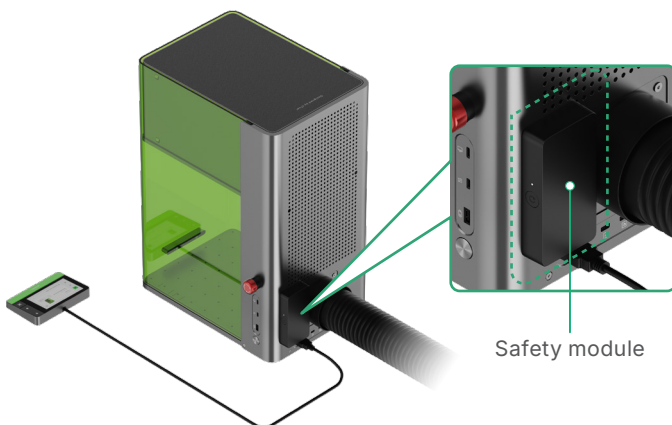


Emergency stop button

If an emergency occurs, you can press the emergency stop button to shut off the machine. After dealing with the emergency, you can turn the emergency stop button to reset it.

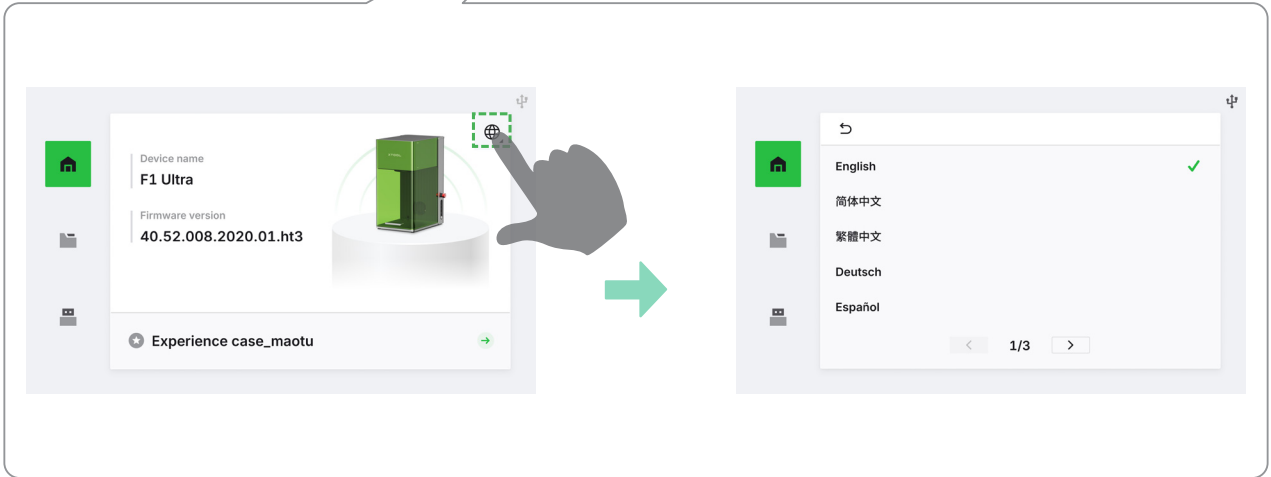
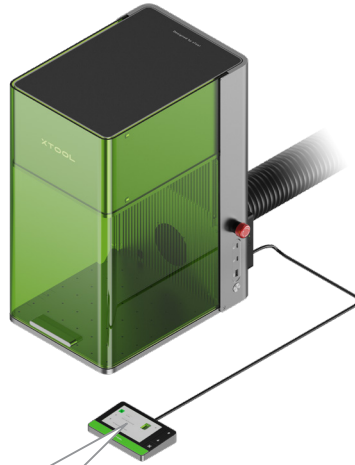


If the safety indicator does not change from white to green automatically, the safety module is activated. Scan the QR code or visit the link and follow the instructions to continue.



support.xtool.com/article/3173

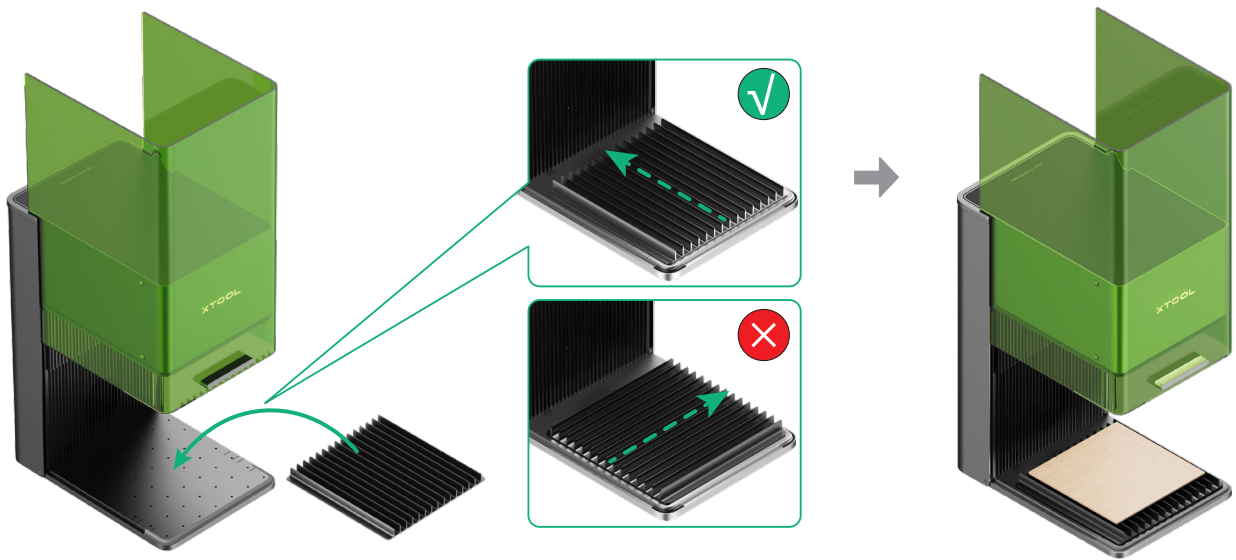
8 Set the UI language of the touchscreen controller.



Install accessories

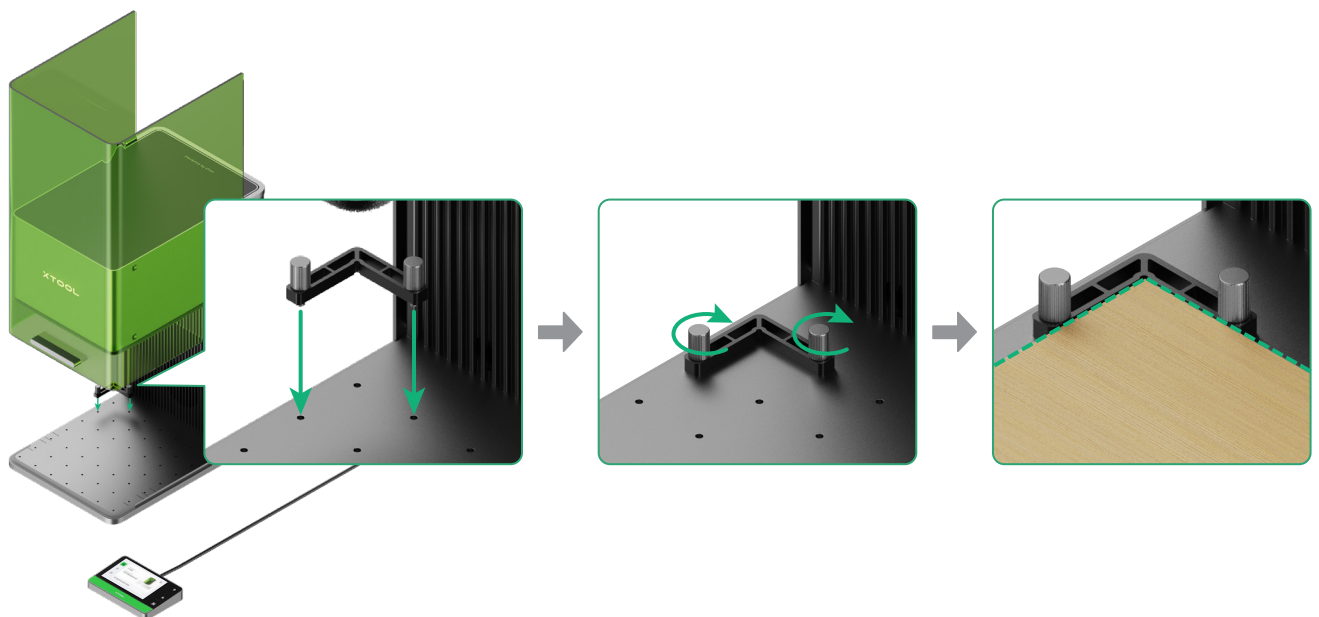
Use the slatted panel

To cut a material, you are advised to use the slatted panel. It can reduce the areas burned during material processing and protect the baseplate.



Use the L-shaped positioning piece

During batch processing, the L-shaped positioning piece can help you place a material in the same position every time.

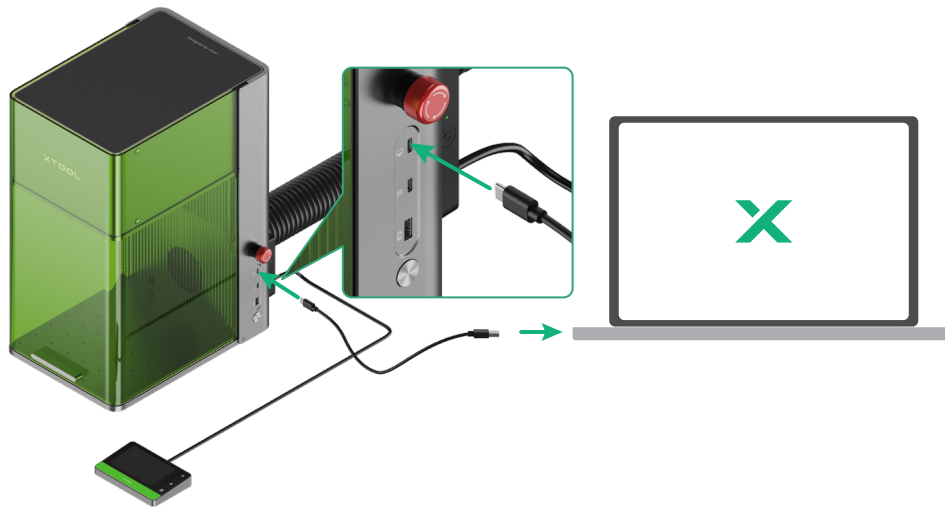


Use your xTool F1 Ultra

(1) Visit s.xtool.com/software to download and install xTool software.




(2) Use the USB cable to connect xTool F1 Ultra to the computer, and then connect xTool F1 Ultra in the software.



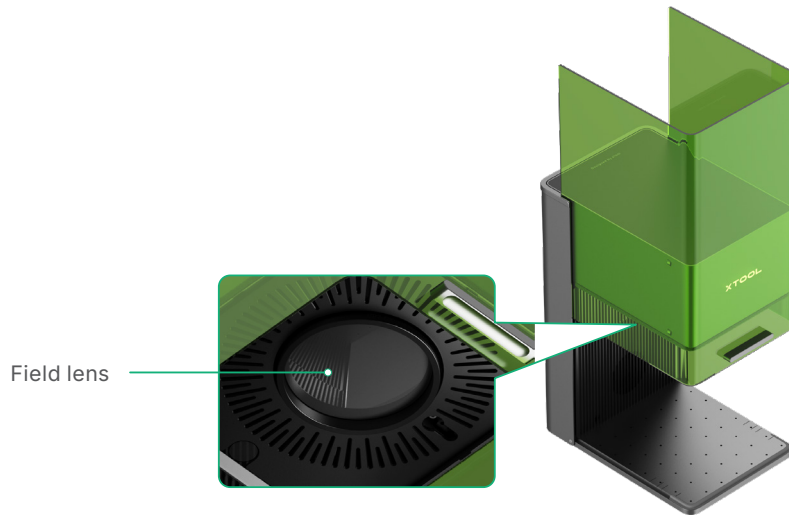
For details about how to use xTool software to operate xTool F1 Ultra to process materials, scan the QR code or visit support.xtool.com/product/33.



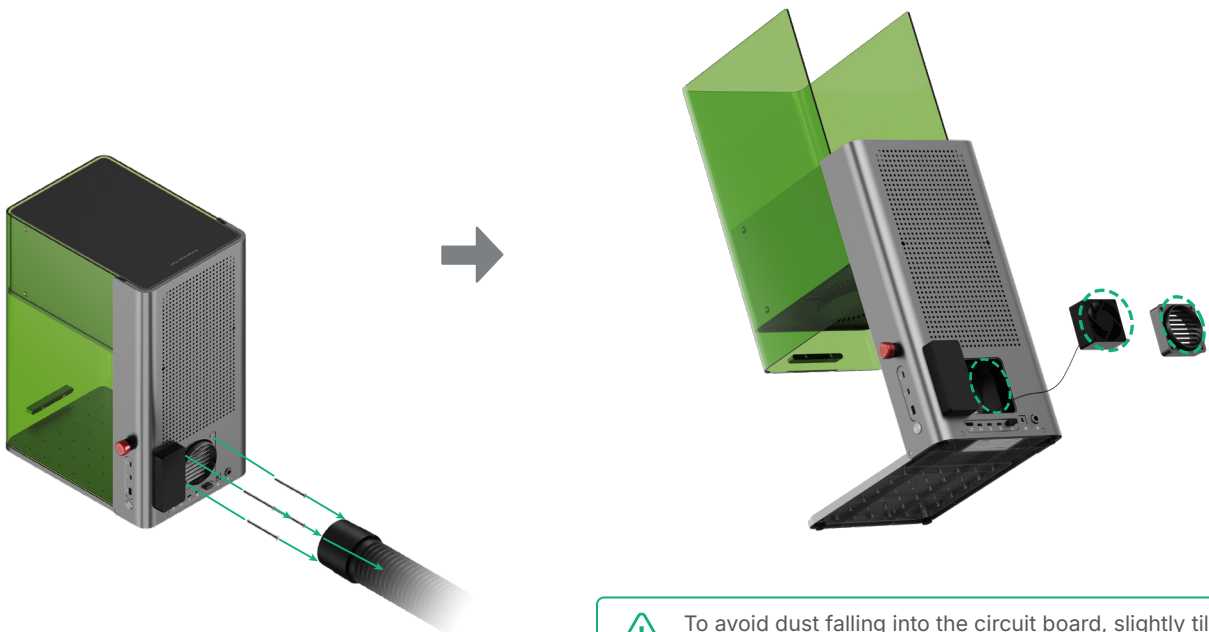
Maintenance


 Disconnect power before maintaining the product.

■ If laser power attenuation occurs, for example, engraved patterns are shallow or materials can't be cut as expected, the field lens may get dirty. Clean it with the lint-free cloth moistened with alcohol.



■ If smoke runs out of the protective enclosure, the fan and smoke outlet may be blocked due to dust. Clean them to ensure proper smoke exhausting.



 To avoid dust falling into the circuit board, slightly tilt the machine.

XTOOL